

**Record of Consultation for the Côté Gold Project
Provincial Individual EA
Appendix K**



Prepared for:
IAMGOLD Corporation

Prepared by:
AMEC Environment & Infrastructure

Project Number:
TC121522



APPENDIX K

SUMMARY REPORT: FEBRUARY 2013 PUBLIC AND STAKEHOLDER OPEN HOUSES

CÔTÉ GOLD PROJECT
SUMMARY OF FEBRUARY 2013 OPEN HOUSES

Submitted to:
IAMGOLD Corporation
401 Bay Street, Suite 3200
Toronto, Ontario
M5H 2Y4

Submitted by:
AMEC Environment & Infrastructure,
a division of AMEC Americas Limited
160 Traders Blvd., Suite 110
Mississauga, Ontario
L4Z 3K7

March 2013

TZ12023

TABLE OF CONTENTS

| | PAGE |
|---|-------------|
| 1.0 INTRODUCTION | 2 |
| 2.0 CONSULTATION PROCESS | 3 |
| 2.1 Notification of the Open Houses | 3 |
| 2.2 Description of the Open Houses | 3 |
| 2.3 Summary of Comment Forms | 4 |
| 2.4 Summary of Comments and Questions | 8 |
| 3.0 CONCLUSION | 9 |

LIST OF TABLES

| | |
|---|---|
| Table 1: Newspaper Publication Schedule | 3 |
| Table 2: Open House Schedule | 3 |
| Table 3: Open House Attendance..... | 4 |
| Table 4: Comment Form Responses | 4 |

LIST OF APPENDICES

| | |
|-------------|---------------------------|
| Appendix A: | Notices |
| Appendix B: | Poster Boards |
| Appendix C: | Comment Forms (Completed) |

1.0 INTRODUCTION

This Summary of February 2013 Open Houses Report (Report) is part of the commitment of the IAMGOLD Corporation (IAMGOLD) to inform and consult with local communities and stakeholders regarding the proposed Côte Gold Project (CGP). The Open Houses were organized by IAMGOLD to introduce IAMGOLD and members of the team, and share information about the Côte Gold Project and the related environmental assessment process. This Report presents a summary of the consultation activities and feedback associated with these sessions.

2.0 CONSULTATION PROCESS

2.1 Notification of the Open Houses

Notifications of the Open Houses were provided in advance to all households in the communities of Gogama, West Tree and Shining Tree as well as the Mattagami First Nation Reserve through the Gogama Local Service Board. Notices were also mailed to all individuals on the Project Mailing List.

Notices were published in local newspapers as summarized in Table 1. Copies of the newspaper advertisements are presented in Appendix A.

Table 1: Newspaper Publication Schedule

| Newspaper | Publication Date |
|---------------------|--|
| Sudbury Star | February 14, 2013 February 21, 2013 |
| Timmins Daily Press | February 12, 2013 February 19, 2013 |
| Timmins Times | February 14, 2013 February 21, 2013 |

2.2 Description of the Open Houses

IAMGOLD organized a series of community open houses that are summarized in Table 2. As part of the February 27, 2013 session in Gogama, IAMGOLD held a closed-door session with members of the Gogama Local Services Board.

Table 2: Open House Schedule

| Community | Date and Time |
|--|------------------------------------|
| Timmins, Ontario McIntyre Community Centre | February 26, 2013 from 3 to 7 p.m. |
| Gogama, Ontario Gogama Community Centre | February 27, 2013 from 3 to 7 p.m. |
| Sudbury, Ontario T.M. Davies Community Centre | February 28, 2013 from 3 to 7 p.m. |

At each of these sessions, IAMGOLD presented a series of poster boards (Appendix B). Participants then were encouraged to view information about IAMGOLD, the Côté Gold Project, environmental baseline activities and consultation information. Formal presentations were given during the course of the open houses to offer a verbal overview of the Project.

Attendees were encouraged to sign a register at the door and indicate whether they would want to be placed on a project mailing list. A summary of the attendance at each session is presented in Table 3.

Table 3: Open House Attendance

| Community | Number of Attendees |
|------------------|--|
| Timmins, Ontario | 54 (+10 did not sign in) |
| Gogama, Ontario | 38 (+18 did not sign in) (14 attendees to the Gogama Local Services Board session) |
| Sudbury, Ontario | 50 |

Comment forms were made available for each attendee (as well as those attending the Gogama Local Services Board session). Project representatives encouraged attendees to fill out and return the comment forms following the session. Comments and questions gathered from comment form submissions and records of conversations recorded by open house staff are presented in Section 2.3.

2.3 Summary of Comment Forms

Completed Comment Forms are presented in Appendix C and a summary of the number of returned Comment Forms is presented in Table 4.

Table 4: Comment Form Responses

| Community | Number of Comment Forms |
|------------------|--|
| Timmins, Ontario | 25 |
| Gogama, Ontario | 3 (+11 from the Gogama Local Services Board session) |
| Sudbury, Ontario | 8 |

1. Which Open House did you attend?

Timmins (February 26, 2013): 25
 Gogama (February 27, 2013): 14
 Sudbury (February 28, 2013): 8

2. How did you hear about this Open House?

| | Timmins | Gogama | Sudbury |
|----------------------------|----------------------|--------|---------|
| Newspaper advertisement: | 8 | 2 | 2 |
| Invitation: | 11 | 12 | 5 |
| Website: | 0 | 0 | 1 |
| From a neighbour / friend: | 5 | 0 | 0 |
| Other: | Wabun Tribal Council | | |

3. How would you rate the following about this Open House (where 1 is poor and 5 is excellent)?

| | Timmins | Gogama | Sudbury |
|---|---------|--------|---------|
| Location of the Open House: | 4.6 | 4.6 | 3.8 |
| Time of day it was held: | 4.5 | 4.6 | 4.1 |
| Length of the session: | 4.3 | 4.6 | 4.0 |
| Information provided: | 4.2 | 4.6 | 3.9 |
| Your opportunity to comment/be heard: | 4.5 | 4.8 | 3.9 |
| Your opportunity to have your questions answered: | 4.5 | 4.7 | 3.9 |

4. Do you have any comments, interests or suggestions related to the Côté Gold Project in general?

Timmins

- As a long time resident of mining in the area I can see you have gone to great lengths to make a safe sustainable project site.
- It is still early in the project so there is not a lot of detail in the slides (timeline, stakeholders, currently active, etc.) that in it provided me with info about when my involvement may begin.
- Biggest challenge from the aquatics perspective will be to manage the collective disturbance to the landscape to manage water quality and quantity to preserve existing productivity.
- I will be keeping a close eye on this project.
- Lots of water to work around but you have take time to work with what you got. Will take some time to keep major interest groups happy but that's the way the world works these days.
- Felt the presentation was good and honestly put forward and answered.
- Water discharge in to Mesomikenda Lake; acid levels (10%, 20% uncertain) and water (Timmins drinking water) as Mesomikenda Lake is the head waters.

- Interest in the construction phases.
- Environmental concerns. Not for waste water dumped into Mesomikenda, Minisinakwa and Mattagami Lakes, Mattagami River, fish, moose, birds, all wildlife is a big concern.
- My concern is tailing and discharge and what is going to be after it's done.

Gogama

- Will it help people in Gogama, not just Timmins and Sudbury? Schooling, will the mine pay for that, help people in town? Will property values go up in town?
- I was hoping to get more information about jobs starting sooner than 2017.
- Presenter did an excellent job. Knowledge on topic presented. Great job Dave.
- The Venture Centre is here to help anyone from our catchment area, Gogama, Mattagami First Nation, Shining Tree, Biscotasing, etc. with any start-up businesses. We do financing or business consulting.
- The Venture Centre is interesting in assisting the community in developing local businesses to meet the requirements from the mine. We offer free consultations and assist with grant applications as well as we have local funds available for business start-up loans. For more information my email is Roxanne@venturecentre.on.ca
- Good to hear from IAMGOLD that they will try to hire people and equipment from Gogama, Mattagami First Nation, and surrounding area first.
- Good luck.
- Look forward to IAMGOLD's presence in our Community!

Sudbury

- Very interesting in supporting with development projects as the project moves forward. Seeking Phillip Gauthiers contact info to discuss. Bulk propane plant, layout, budgeting, etc among other projects.
- In the information provided, it is written that the project is "about 170km by road northwest of Sudbury". I'm assuming this distance is taken from Sudbury's downtown as opposed to communities within the City of Greater Sudbury that may be most affected such as Chelmsford, Dowling, Levack, Onaping, etc. These communities are location right on Hwy 144 and still within the Greater Sudbury municipal boundary. The distance from the Northwest edge of the City (i.e., Levack, Onaping) should perhaps be noted in the information provided.
- The mine waste rock area closest to the original camp is not acceptable to the cottagers near the landing.

5. Do you have information that might be relevant about the environment in or adjacent to the proposed mine area?

Timmins

- No. It is a beautiful area; however, it looks like you have very good plans for low impact on the area.
- I have never been to the area; I'm looking forward to a visit.

- I have a good understanding of the aquatic productivity of lakes, rivers and stream in the Timmins area. Suggest initial focus be on preserving catchment areas of existing watersheds.
- Perhaps a look at Lakeshore Gold would help as that mine is located near our potable water intake. They also have good ways to clear their dirty water.
- Not familiar with the area.
- I have a cottage on Mattagami Lake across from the reserve.
- The proposed tailings pond is adjacent to and discharges through Intake Protection Zone 3 into Mesomikenda Lake which is the headwaters of the Mattagami River which is the source of drinking water for the City of Timmins.

Gogama

- Fish area and wildlife.

6. Additional questions or comments (if you would like a reply please provide your contact information below)?

Timmins

- There are a lot of slides and I'm hoping this info is available on the website (there is no clear indication of that). If I cannot find it I will contact Cheryl Naveau.
- Overall, good open house. Opportunity to ask questions. Still much to be discovered and learned about site, especially water management, quantity and quality.
- Would be very interested in seeing more information on aquatic inventories for the proposed project area.
- Would be interested in a site tour.
- Nothing at the moment; all questions thoroughly answered at the open house.
- Concerned with lake level as OPG draws down the level a lot in the winter and it takes a while to get it back in the spring.
- Would appreciate the opportunity to quote on construction and maintenance of the mine facility.
- At life end what happens to the pit?
- I have questions regarding effluent discharge into Mesomikenda Lake, an OPG managed reservoir, and the impact, if any, it may have on the Mattagami River System Water Management Plan (other mining project have required minimum flow regimes from control dams for effluent dilution).
- All of our Technical Reports, the Assessment Report and the Proposed Source Water Protection Plan are posted on the Drinking Water Source Protection website at www.dwsp.ca

Gogama

- Later. Disabled now but would work there later if asked.
- I was hoping you were excepting applications.

Sudbury

- Please provide Phillip Gauthiers contact info.
- We look forward to the opportunity to be consulted on the socio-economic information. Thanks.
- Could have had a poster board along with the handout for the mining statistics and resources.

7. Do you want to be added to our mailing list for future information about the Project?

Timmins (February 26, 2013): 17

Gogama (February 27, 2013): 2

Sudbury (February 28, 2013): 4

2.4 Summary of Comments and Questions

The following presents a summary of the types of questions received during the sessions.

- Size and height of the TMF and rock piles;
- Proposed discharge point;
- Use of herbicide along the transmission line;
- Potential impact on drinking water (Timmins and area) due to proposed discharge point;
- ARD;
- Water management on-site (and specifically TMF);
- Noise currently and into the future;
- Impact to trap line and quotas;
- Operation phase: 24 hours/day?
- Will lime be used?
- Will the closure see the pit to be flooded?
- Mesomikenda Lake is a dammed lake – drains significantly in the winter;
- Preference for transmission line to be along existing corridor (limit impact to interior lands); and
- Size and location of the open pit (comments were: can it be an underground mine instead, can you move to save the lake).

3.0 CONCLUSION

Overall, there was a positive interest in the Project as a socio-economic benefit to the area. Citizens were generally interested to know more about the potential effect of the project on water bodies, local residents and land users, environmental management and closure concepts. There were also comments about the mining process and the need for open pit versus underground mining.

APPENDIX A
NOTICES

You're Invited...

to come out to one of our community events to learn more about the Côté Gold Project.



IAMGOLD Corporation is hosting community open houses to share information about the Côté Gold Project, a proposed open pit gold mine, located 20 kilometres southwest of Gogama, Ontario. IAMGOLD has begun preparing a draft Project Description as part of the Federal environmental assessment process under the *Canadian Environmental Assessment Act, 2012*.

IAMGOLD would like to meet with residents and stakeholders in the area, to hear your thoughts about the Project and what environmental considerations are important to you so that they may be considered in Project plans.

To ask questions or provide comments about the Côté Gold Project please contact:

Steven Woolfenden

Manager, Corporate Environmental
Assessment and Approvals

Tel: 416- 594-2884

Email: Steven_Woolfenden@iamgold.com

Cheryl Naveau

First Nations Liaison and
Public Relations

Tel: 705-269-0010

Email: Cheryl_Naveau@iamgold.com

**PLEASE DROP BY ONE
OF OUR COMMUNITY
OPEN HOUSES:**

Tuesday, February 26th

3:00 to 7:00 p.m.

McIntyre Community Centre

85 McIntyre Road

Timmins (Schumacher), ON

Wednesday, February 27th

3:00 to 7:00 p.m.

Gogama Community Centre

Highway 661, Gogama, ON

Thursday, February 28th

3:00 to 7:00 p.m.

T.M. Davies Community Centre

(Walden Community Centre)

325 Anderson Drive

Sudbury (Lively), ON

classifiedextra.ca

Canada's largest and most trusted print and online classifieds network

-  Merchandise
-  Pets Agriculture
-  Real Estate Rentals
-  Vacation Travel
-  Employment Education
-  Community Services
-  Announcements
-  Garage Sales
-  Transportation
-  Home Improvement
-  Professional Services
-  Notices
-  Personals

Place it on classifiedextra.ca

Phone: 1-866-541-6757

Fax: 1-866-485-8461

Online: thesudburystar.classifiedextra.ca

Email: placeit@classifiedextra.ca

Careers

A780

You're Invited...

to come out to one of our community events to learn more about the Côté Gold Project.

IAMGOLD Corporation is hosting community open houses to share information about the Côté Gold Project, a proposed open pit gold mine, located 20 kilometres southwest of Gogama, Ontario. IAMGOLD has begun preparing a draft Project Description as part of the Federal environmental assessment process under the *Canadian Environmental Assessment Act, 2012*.

IAMGOLD would like to meet with residents and stakeholders in the area, to hear your thoughts about the Project and what environmental considerations are important to you so that they may be considered in Project plans.

To ask questions or provide comments about the Côté Gold Project please contact:

Steven Woolfenden
Manager, Corporate Environmental Assessment and Approvals
Tel: 416-594-2884
Email: Steven.Woolfenden@iamgold.com

Cheryl Naveau
First Nations Liaison and Public Relations
Tel: 705-269-0010
Email: Cheryl.Naveau@iamgold.com

IAMGOLD Corporation - Côté Gold Project 3 Mesomikenda Lake Rd | P.O. Box 100 | Gogama, ON P0M 1W0 | cotegold@iamgold.com



PLEASE DROP BY ONE OF OUR COMMUNITY OPEN HOUSES:

Tuesday, February 26th
7:00 to 7:00 p.m.
McIntyre Community Centre
85 McIntyre Road
Timmins (Schumacher), ON

Wednesday, February 27th
3:00 to 7:00 p.m.
Gogama Community Centre
Highway 601, Gogama, ON

Thursday, February 28th
9:00 to 7:00 p.m.
T.M. Davies Community Centre
(Walden Community Centre)
225 Anderson Drive
Sudbury (Havelock), ON

yourlifemoments.ca

Marking your milestones.

1-866-541-6757
milestones@yourlifemoments.ca

Obituaries | In Memoriam | Thanks | Births | Celebrations | More

Card of thanks



TRAMONTINI, Ilio - Robert, Betty Jane and Paul Tramontini wish to express our most sincere appreciation and thanks for the consideration and kindness shown to our family regarding the passing of Ilio.

His last 14 months were spent at the Walford on the Park in Copper Cliff. Thank you to Betty Meigs, Andrea, Tammy, Allison, Sue, and the rest of the staff and residents for their care, attention and friendship that made his stay so enjoyable.

A special thank you to Ilio's family doctor Paul Gibb, for his care, concern and advice. Ilio always looked forward to his visits.

Thank you to Louise McNabb and the staff at St. Joseph's Continuing Care Centre. Their efforts allowed us to say our final good-byes. Also, thank you to CCAC and Home Instead Senior Care for all their help.

Thank you to Catherine Coe from the Loughheed Funeral Home for her professional and valued assistance to our family.

Apartments Unfurnished A610

HOME RENTALS:
Are you an out town worker? Home not ready to move in? We have 9 furnished homes, all appliances, flat screen tvs, cable & internet, snow.
Also Hotel Rooms from

General Employment A800

IONEER

EDUCATION

Notices

Adult Entertainment A970

Alexandra Brems
19 yrs French Canadian
In calls only 24hrs/7 DT
Text only 416-820-04740





Deputy Police Chief Des Walsh, left, and Chief John Gauthier spoke to city council this week.

Timmins Times

The Timmins Times is your source for LOCAL news. More people read The Timmins Times than any other newspaper in Timmins.

Help to protect your family's financial security



The right life insurance can have an enormous effect on your life and the lives of those you love. It can mean the difference between leaving your loved ones well positioned financially or leaving behind debts and an inadequate income. Please contact me today to find out if your family has sufficient insurance protection.

Lucie Proulx
Financial Security Advisor
705-264-2204, ext. 233
Cell: 705-365-8049
lucie.proulx@f55f.com



A Division of London Life Insurance Company
Freedom 55 Financial and design are trademarks of London Life Insurance Company.

Cost of policing in Timmins goes up

By **LEN GILLIS**
len.gillis@sunmedia.ca

Nearly one dollar in every five dollars raised in municipal taxes in Timmins goes to pay for the local police service. That figure is expected to climb in the coming years, as the cost of police wages, benefits and pensions also climbs.

That was one of items revealed this week as the Timmins Police Service (TPS) presented its budget estimates for 2013. TPS is asking Timmins City Council to approve a 2.45 per cent budget increase for 2013.

The Timmins Police Services Board approved the new police budget estimates Monday afternoon. The budget estimates were then presented to Timmins city council, Tuesday evening for discussion and consideration.

In 2012, the TPS budget was \$12.5 million. Actual spending was a bit higher at 12.7 million

Deputy Police Chief Des Walsh told the board Monday the projected increase of 2.45 per cent came at the direction of city hall. That would bring the 2013 TPS budget to \$13.1 million.

"Originally when we started deliberations over the 2013 budget, when we started working on it, the chief and I were directed to, if at all possible, to keep the budget increase below three per cent," said Walsh.

"Most of the increase, as a matter of fact the vast majority of the increase, is as a result of salary increases," said Walsh. Timmins Police Association officers are currently working on their old contract and are awaiting arbitration to determine the increase in their new contract. The new contract will be retro-active to January 1, 2012.

While it is not known how much of an increase might be awarded through arbitration, the TPS senior officers were awarded a 2.5 per cent increase in each year of 2011, 2012 and 2013 in an arbitration decision. That award was provided last spring.

Arbitration awards in general, in Ontario, have been more generous than contract agreements with municipalities.

Walsh said that in order to bring in a budget increase of less than three per cent, the police service decided to cut back on some its capital spending for 2013.

"We are actually reducing the number of vehicles in our fleet and we are making our vehicles last a little bit longer, with regular maintenance, which at the end of the day saves us a lot of dollars," said Walsh. He said there are roughly 30 vehicles in the fleet, including motorcycles, ATVs and snowmobiles.

CONTINUED on Page Seven

AUTOMOTIVE DETAILING



HOT WATER EXTRACTION SYSTEM

Ger her clean, protect her finish and **NEVER WAX AGAIN** with paint protection finish. Two excellent automotive services

With PPS

We also specialize in:

Commercial janitorial services - Truckmount carpet & upholstery cleaning (Residential & Commercial)

Super City Cleaning Services

433 OAK AVENUE • 705-267-1831

You're Invited...

to come out to one of our community events to learn more about the Côté Gold Project.



IAMGOLD Corporation is hosting community open houses to share information about the Côté Gold Project, a proposed open pit gold mine, located 20 kilometres southwest of Gogama, Ontario. IAMGOLD has begun preparing a draft Project Description as part of the Federal environmental assessment process under the *Canadian Environmental Assessment Act, 2012*.

IAMGOLD would like to meet with residents and stakeholders in the area, to hear your thoughts about the Project and what environmental considerations are important to you so that they may be considered in Project plans.

To ask questions or provide comments about the Côté Gold Project please contact:

Steven Woolfenden
Manager, Corporate Environmental Assessment and Approvals
Tel: 416-594-2884
Email: Steven.Woolfenden@iamgold.com

Cheryl Naveau
First Nations Liaison and Public Relations
Tel: 705-269-0010
Email: Cheryl.Naveau@iamgold.com

PLEASE DROP BY ONE OF OUR COMMUNITY OPEN HOUSES:

Tuesday, February 26th
3:00 to 7:00 p.m.
McIntyre Community Centre
85 McIntyre Road
Timmins (Schumacher), ON

Wednesday, February 27th
3:00 to 7:00 p.m.
Gogama Community Centre
Highway 661, Gogama, ON

Thursday, February 28th
3:00 to 7:00 p.m.
T.M. Davies Community Centre
(Walden Community Centre)
325 Anderson Drive
Sudbury (Lively), ON

Americ - Human

entertainment

amble
tion

Return of the Mac

Legendary California rockers release Super Deluxe Edition of Rumours



Today's gone, Fleetwood is back in 1977. They've been using those words ever since. In 35 years after releasing their magnum opus, the Calliopeans still can't escape the '70s. Nor can we. The album has sold 45 million copies over the years, and was already scheduled for reissue back in 2004.

But since the Mac are hitting the road again — and without a new album — it's back again. And kitted out with even more goodies in a \$100 Super Deluxe Edition housed in a slipcover box. Along with CD and gatefold-vinyl versions of the album — a frankly revealing document of the bandmembers' soap-opera romantic trials and

tribulations — the box includes:

- Two CDs of intriguing demos and outtakes, including a stripped-down *Dreams*, early versions of *Planets of the Universe* and plenty more (one of the discs was included in that 2004 reissue);
- Another CD of energetic live recordings from their

1977 tour, which will remind (or inform) you how hard the Mac used to rock at times;

■ A DVD featuring a 30-minute 1978 documentary with six live performances;

■ A 20-page booklet with the usual assortment of liner notes, track-by-track reminiscences, photos, and whatnot.

Sure, it's mostly second-hand news. But there's no denying it's the definitive version of a '70s classic — until the 40th anniversary edition in 2017, anyway. After all, if the Mac have taught us anything, it's never to stop thinking about tomorrow.

★★★★ 1/2

Fleetwood Mac
Rumours: Super Deluxe Edition

Best of the Rest

More of the new music available this week

Long

★★★★

The new British invasion continues. The product of London's folk scene, guitarist Long is a young man with a wild soul and weathered pipes. He serves them up well on his compelling new set of raw-boned roots-rock with a southern soul.

Frightened Rabbit

★★★★

Pedestrian Verse

Misery loves company. Or at least accompaniment. Misanthropic Scottish singer-guitarist Scott Hutchison lightens up his fourth disc with life-affirming lyrics — and inventively idiosyncratic indie-rock anthems penned with his band for once. Feel the love.

The Virginmarys

★★★★

King of Conflict

Rock is dead, they say. Long live rock, reply this hard-hitting U.K. power trio. And they're as good as their word on this explosive debut, noisily fusing '60s blues-based bombast and '90s grunge intensity with today's feisty indie mayhem. Worship at their altar.

The View

★★★★ 1/2

Cheeky for a Reason

Cheeky, yes. Prompt, no. The scrappy Scottish lads' fourth full-length came out in the U.K. last summer — but for those who haven't savoured their clanging, melodic and exuberantly shaggy brand of Arctic Monkeys-style rock, there's no reason to delay.



Frightened Rabbit

A780

You're Invited...

to come out to one of our community events to learn more about the Côté Gold Project.

IAMGOLD Corporation is hosting community open houses to share information about the Côté Gold Project, a proposed open pit gold mine, located 20 kilometres northwest of Gogama, Ontario. IAMGOLD has begun preparing a draft Project description as part of the Federal environmental assessment process under the Canadian Environmental Assessment Act, 2012.

IAMGOLD would like to meet with residents and stakeholders in the area, to hear your thoughts about the Project and what environmental considerations are important to you so that they may be considered in Project plans.

ask questions or provide comments about the Côté Gold Project please contact:

Steven Woolfenden
Manager, Corporate Environmental
Assessment and Approvals
416-594-2884
Email: Steven.Woolfenden@iamgold.com

Cheryl Naveau
First Nations Liaison and
Public Relations
Tel: 705-269-0010
Email: Cheryl.Naveau@iamgold.com

IAMGOLD CORPORATION

PLEASE DROP BY ONE OF OUR COMMUNITY OPEN HOUSES:

Tuesday, February 26th
1:00 to 7:00 p.m.
McIntyre Community Centre
25 McIntyre Road
Tumbler Bay, Ontario, ON

Wednesday, February 27th
1:00 to 7:00 p.m.
Gogama Community Centre
Highway 108, Gogama, ON

Thursday, February 28th
1:00 to 7:00 p.m.
T.M. Davies Community Centre
(Walkden Community Centre)
325 Anderson Drive
Sudbury (L1V 6V1), ON

MOST WANTED DEALS IN TOWN

Find Them in the Classified Pages

AMEC - Human

classifiedextra.ca

Canada's largest and most trusted print and online classifieds network

- Merchandise
- Pets Agriculture
- Real Estate Rentals
- Vacation Travel
- Employment Education
- Community Services
- Announcements
- Garage Sales
- Transportation
- Home Improvement
- Professional Services
- Notices
- Personals

Place it on classifiedextra.ca

Phone: 1-866-541-6757

Fax: 1-866-485-8461

Online: thesudburystar.classifiedextra.ca

Email: placeit@classifiedextra.ca

Careers

A780

You're Invited...

to come out to one of our community events to learn more about the Côté Gold Project.



IAMGOLD Corporation is hosting community open houses to share information about the Côté Gold Project, a proposed open pit gold mine, located 20 kilometres southwest of Gogama, Ontario. IAMGOLD has begun preparing a draft Project Description as part of the Federal environmental assessment process under the *Canadian Environmental Assessment Act, 2012*.

IAMGOLD would like to meet with residents and stakeholders in the area, to hear your thoughts about the Project and what environmental considerations are important to you so that they may be considered in Project plans.

To ask questions or provide comments about the Côté Gold Project please contact:

Steven Woolfenden
Manager, Corporate Environmental Assessment and Approvals
Tel: 416-594-2884
Email: Steven.Woolfenden@iamgold.com

Cheryl Naveau
First Nations Liaison and Public Relations
Tel: 705-269-0010
Email: Cheryl.Naveau@iamgold.com

PLEASE DROP BY ONE OF OUR COMMUNITY OPEN HOUSES:

Tuesday, February 26th
6:00 to 7:00 p.m.
McIntyre Community Centre
85 McIntyre Road
Timmins (Schumacher), ON

Wednesday, February 27th
2:00 to 7:00 p.m.
Gogama Community Centre
Highway 691, Gogama, ON

Thursday, February 28th
6:00 to 7:00 p.m.
T.M. Davies Community Centre
(Walden Community Centre)
325 Anderson Drive
Sudbury (Ivady), ON

IAMGOLD Corporation - Côté Gold Project

3 Mesomikenda Lake Rd | P.O. Box 100 | Gogama, ON P0M 1W0 | cotegold@iamgold.com

yourlifemoments.ca

Marking your milestones.

1-866-541-6757

milestones@yourlifemoments.ca

Obituaries | In Memoriam | Thanks Births | Celebrations | More

Announcements

In memoriam



BARBE (Freeland), Margaret Elizabeth - who passed away February 21, 2010

We often sit & think of her when we are all alone. For memory is the only friend that grief can call it's own. Like ivy on the withered oak, when all other things decay, our love for her will still remain.

Apartments Unfurnished A610

HOME RENTALS: Are you an out town worker? Home not ready to move in? We have 9

Spacious 2 Bedroom Townhouses New Sudbury Area 1,468 s. ft. 4 appliances

Notices A910 **CRIMINAL RECORD?** Don't let your past limit your career plans! Simon 1989 Confidential, fast

Notices A910



Michael Doody, left, and Mike Barker.

Professional Engineers in Timmins and other parts of Northeastern Ontario will soon be celebrating National Engineering Month to help raise awareness of the profession and to raise interest among students. March 2013 was proclaimed as Engineering Month in Timmins at city hall with acting mayor Mike Doody, left, signing the proclamation with Mike Barker, representing Porcupine-Kapuskasung Chapter of the Professional Engineers of Ontario (PEO). The engineering group will have several events in March to observe the month. This includes a partnership event with Science Timmins hosting the Annual Software Engineering Competition at the Timmins Public Library on March 4th. On March 5th, Porcupine-Kapuskasung PEO chapter will host a special dinner event at the Porcupine Dante Club. For tickets, please contact Andrew Sandrasagra at 705 465-1829. On March 8th, the engineering group will launch their 4th annual PEO Porcupine-Kapuskasung Chapter Scholarship Program with registration forms located in all eligible schools in the region to provide financial assistance to two successful candidates to attend a university engineering program.



You're Invited...

to come out to one of our community events to learn more about the Côté Gold Project.



IAMGOLD Corporation is hosting community open houses to share information about the Côté Gold Project, a proposed open pit gold mine, located 20 kilometres southwest of Gogama, Ontario. IAMGOLD has begun preparing a draft Project Description as part of the Federal environmental assessment process under the *Canadian Environmental Assessment Act, 2012*.

IAMGOLD would like to meet with residents and stakeholders in the area, to hear your thoughts about the Project and what environmental considerations are important to you so that they may be considered in Project plans.

To ask questions or provide comments about the Côté Gold Project please contact:

Steven Woolfenden
 Manager, Corporate Environmental
 Assessment and Approvals
 Tel: 416-594-2884
 Email: Steven.Woolfenden@iamgold.com

Cheryl Naveau
 First Nations Liaison and
 Public Relations
 Tel: 705-269-0010
 Email: Cheryl.Naveau@iamgold.com

PLEASE DROP BY ONE OF OUR COMMUNITY OPEN HOUSES:

Tuesday, February 26th
 3:00 to 7:00 p.m.
McIntyre Community Centre
 85 McIntyre Road
 Timmins (Schumacher), ON

Wednesday, February 27th
 3:00 to 7:00 p.m.
Gogama Community Centre
 Highway 661, Gogama, ON

Thursday, February 28th
 3:00 to 7:00 p.m.
T.M. Davies Community Centre
 (Walden Community Centre)
 325 Anderson Drive
 Sudbury (Lively), ON

IAMGOLD Corporation - Côté Gold Project

3 Mesomikenda Lake Rd | P.O. Box 100 | Gogama, ON P0M 1W0 | cotegold@iamgold.com

Croisière Pays Scandinaves & Russie
9 au 18 juillet 2013
Branson, Nashville & Memphis
18 au 29 septembre 2013

CABANE à SUCRE
Mont St-Grégoire
24 au 28 mars 2013
La ville de NEW YORK
25 avril au 1 mai 2013

Réservations : 1-800-461-9665



VOYAGES **Lacroix** TOURS
 (705) 362-5279 ou (800) 461-9665

www.lacroixtours.com
 Travel Industry Act #04323358



“ I love Boréal! My program is better than I expected and the fact that it is in French is a great advantage! ”

– Dani Lajeunesse, Techniques pharmaceutiques/
 Pharmacy Technician*

COLLÈGE BORÉAL



COLLEGEBOREAL.CA

* all courses offered in French

APPENDIX B
POSTER BOARDS

IAMGOLD's CÔTÉ GOLD PROJECT

(NOTE: presentation amended April 2013 to correct some photograph captions)



Welcome

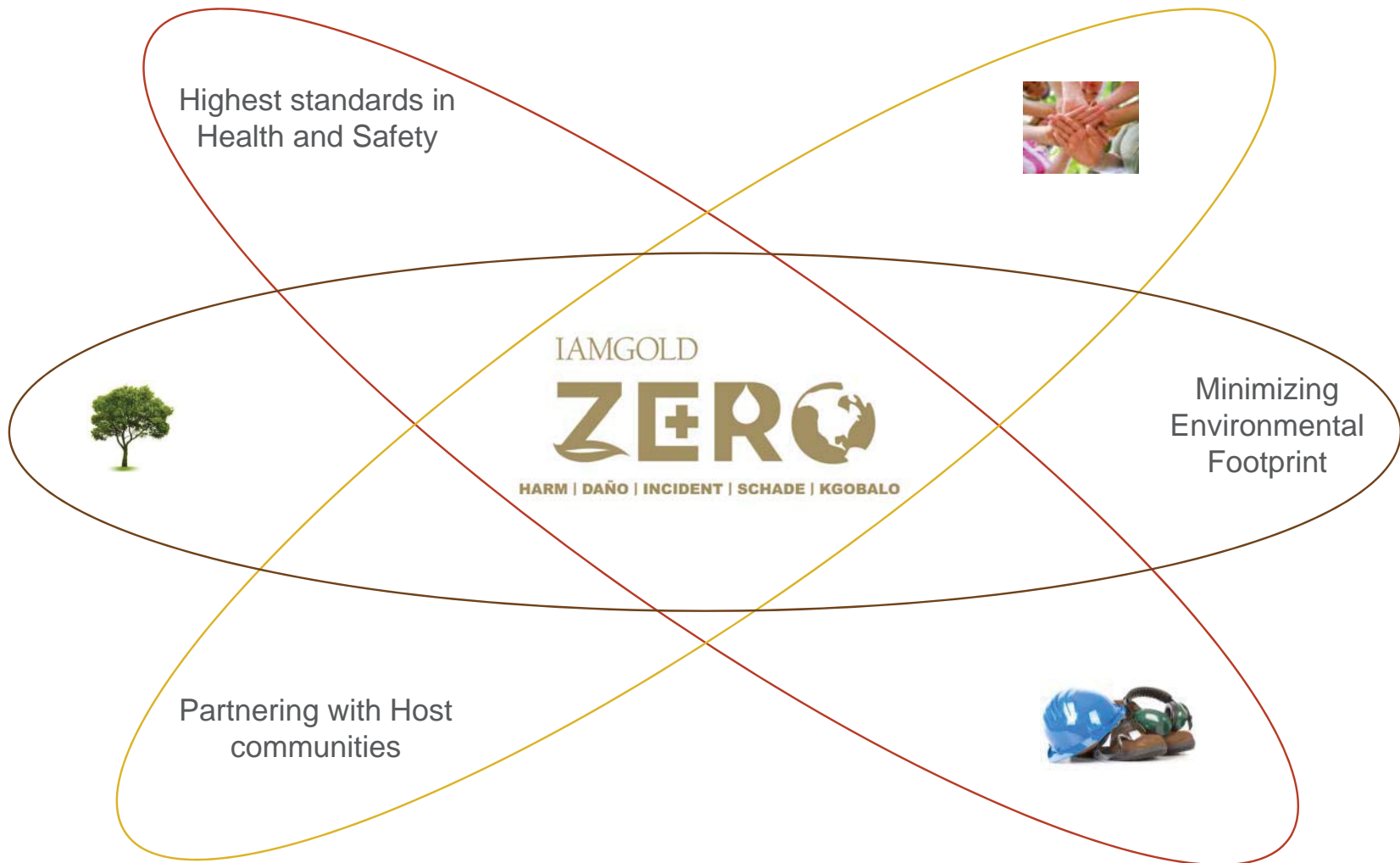
TSX: IMG NYSE: IAG

Purpose of our Open House

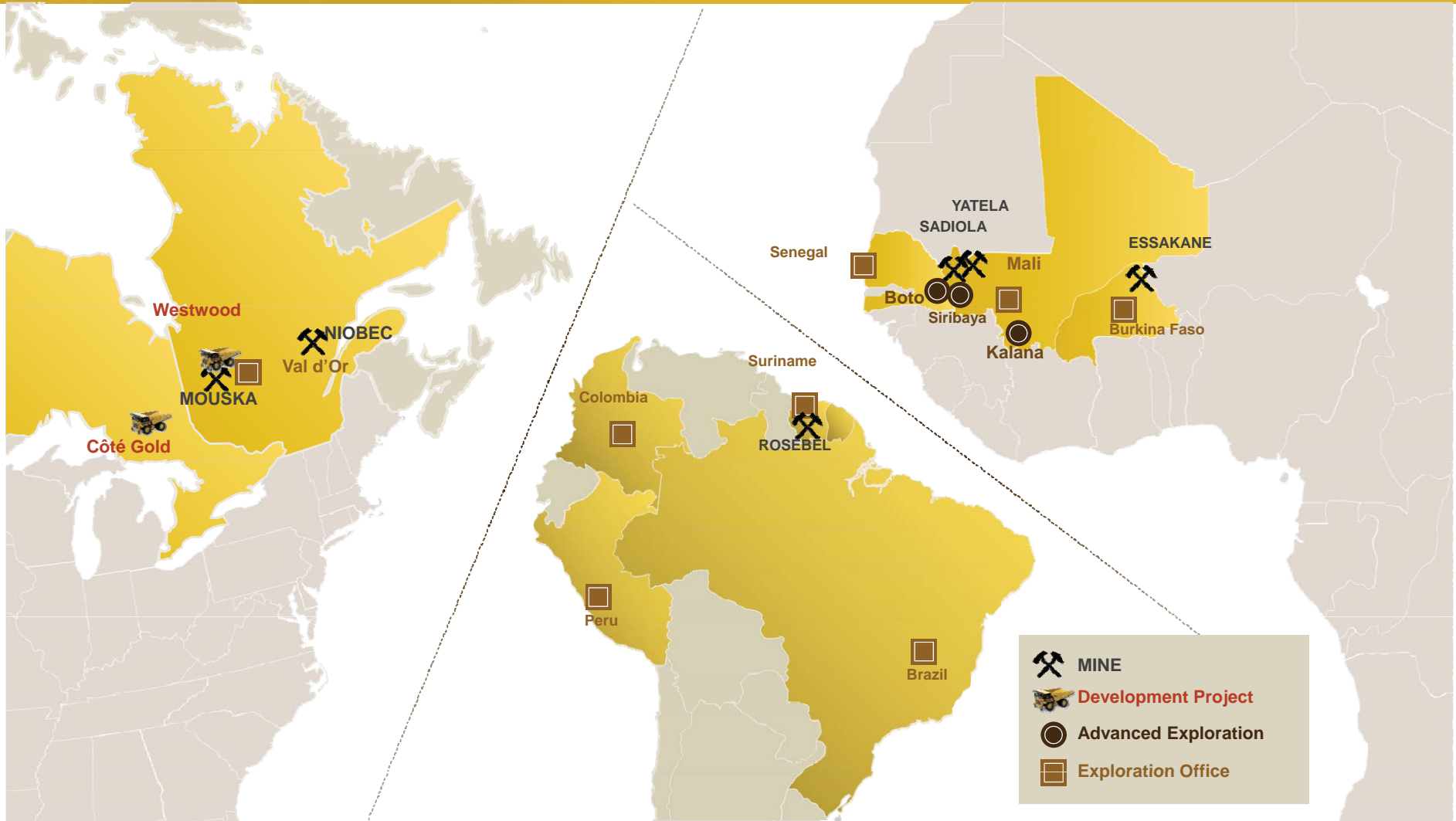
- **Provide an overview of:**
 - › Project components (preliminary)
 - › Potential environmental effects
 - › How and when we would involve you in the environmental assessment
- **Hear and record your thoughts on the above**
- **Consider your feedback for incorporation into a final “Project Description” report for submission to the Canadian Environmental Assessment Agency in March 2013**
- **The Province (Ministry of Northern Development and Mines and other agencies) will also review the Project Description and use it to determine what type of Provincial Environmental Assessment is required**



Who is IAMGOLD Corporation? Conduct Governed by Zero Harm Framework



IAMGOLD's Global Mining Operations



IAMGOLD's Social Partnerships

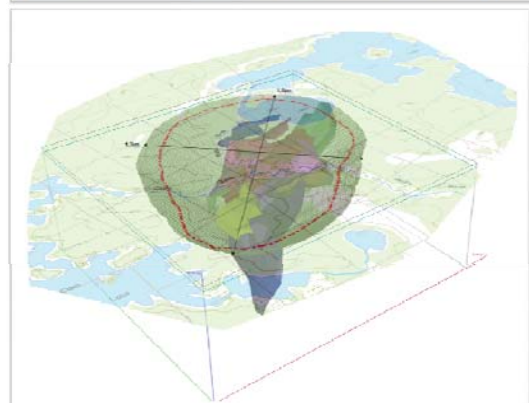
IAMGOLD's approach to community investment is to develop partnerships with local, regional and national stakeholders, recognizing the need for local insight, sustainability, transparency and quality.

Across Quebec, Ontario, Burkina Faso, and Suriname, IAMGOLD maintains 50 partnerships with government and civil society organizations. Canadian partners include: Relay for Life, Canadian Cancer Society, CIDA, Plan Canada, Right to Play, and United Way.



Côte Gold Project: Overview

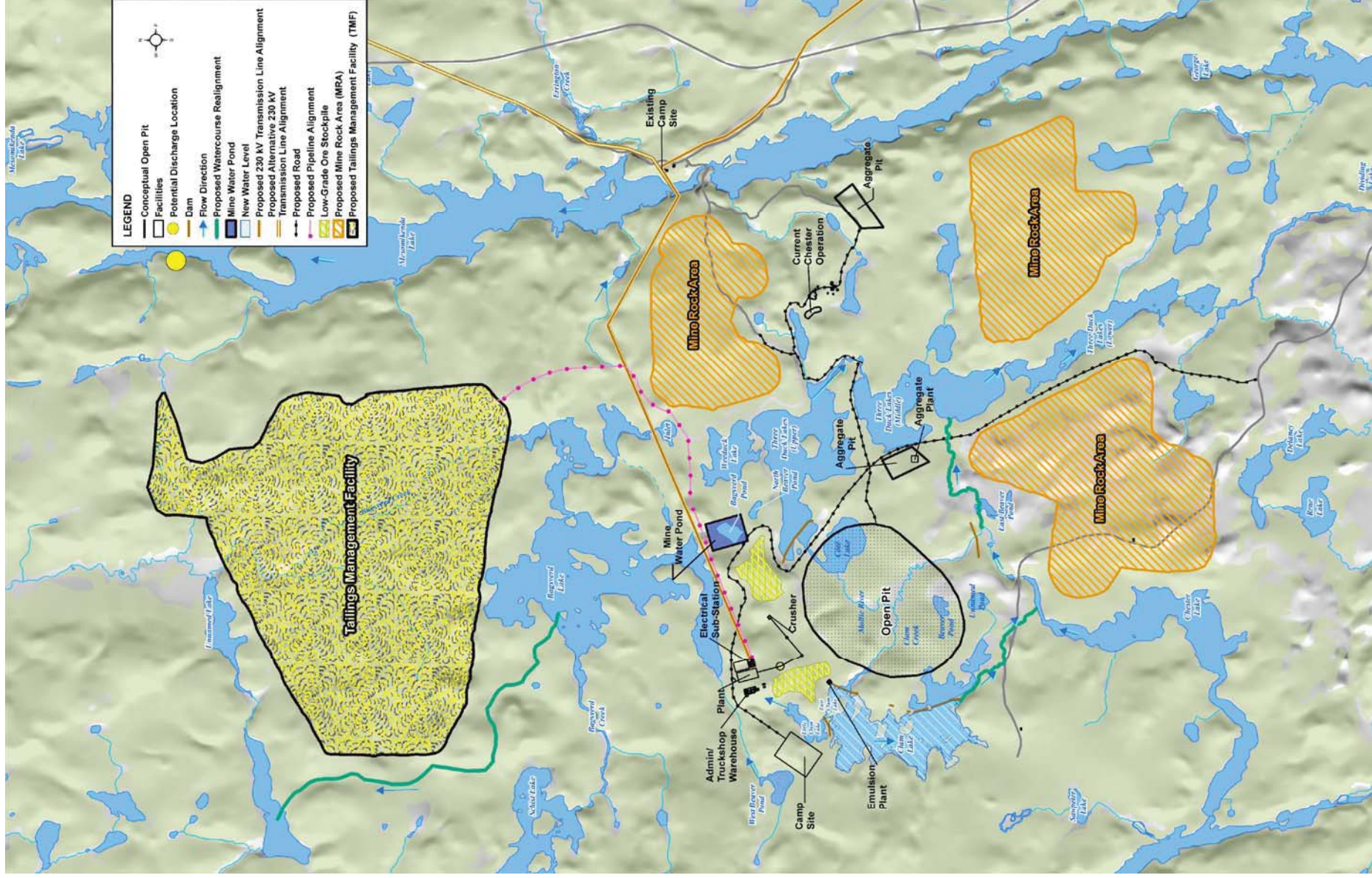
- **Previously owned by Trelawney; purchased by IAMGOLD in June 2012**
- **Located in Chester Township**
 - › Approx. 20 kilometres (km) southwest of Gogama
 - › Approx. 130 km south of Timmins and 170 km north of Sudbury
- **Prospecting/exploration in this area since 1900**
- **Project site would include the open pit, ore processing plant, mine rock areas, tailings management facility, camp and office buildings.**
- **Currently preparing a Pre-Feasibility Study. It is estimated that the open pit gold mine could:**
 - › Operate for 15 years
 - › Process 60,000 tonnes per day



Côté Gold Project: Preliminary Planning and Approvals Schedule



Preliminary Site Plan



Open Pit

■ Estimated Dimensions

- › Depth: approx. 650 metres deep
- › Surface area: approx. 210 hectares

■ Expected Production

- › Open pit mining rate is expected to be 60,000 tonnes per day

■ How would it be mined?

- › The benches in rock would be developed by blasting
- › Conventional shovel and truck type operation
- › Ore, mine rock and overburden removed from the open pit would be trucked to the surface
- › May include an In-pit Crushing and Conveying (IPCC) system
 - › Involves the use of crushing machinery that can be relocated to minimize the vertical haulage component carried out by the haul trucks



Typical haul truck



Rio Tinto, Palabora Open Pit

Mine Rock Areas

■ Project development is expected to generate:

- › Mine rock: 850 million tonnes
 - › 730 hectares by up to 100 metres high
- › Overburden: 20 million tonnes
 - › 150 hectares by up to 100 metres high

■ Use:

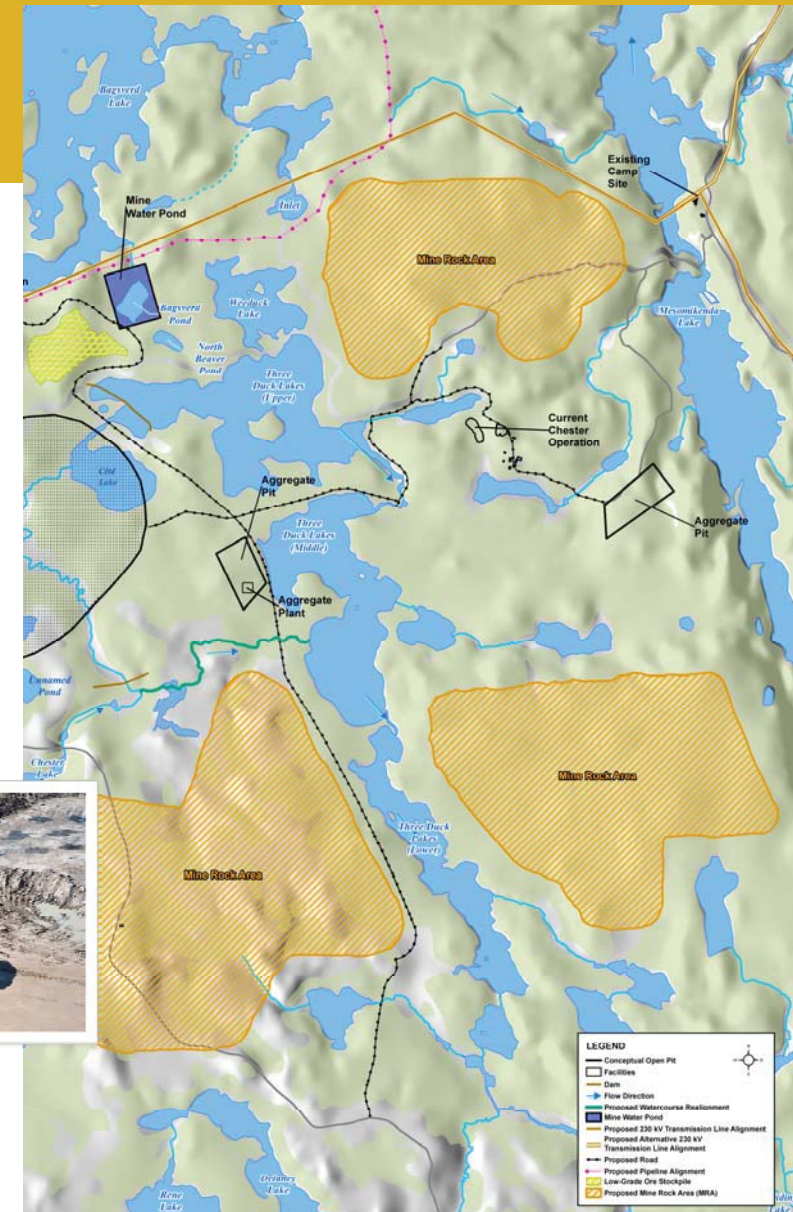
- › About 40 million tonnes of mine rock would be used in Project site construction and maintenance (i.e., dams and roads)
- › Some overburden would be used in final reclamation
- › Unused overburden and mine rock would be managed on the site

■ Environmental Impacts – Rock Analysis

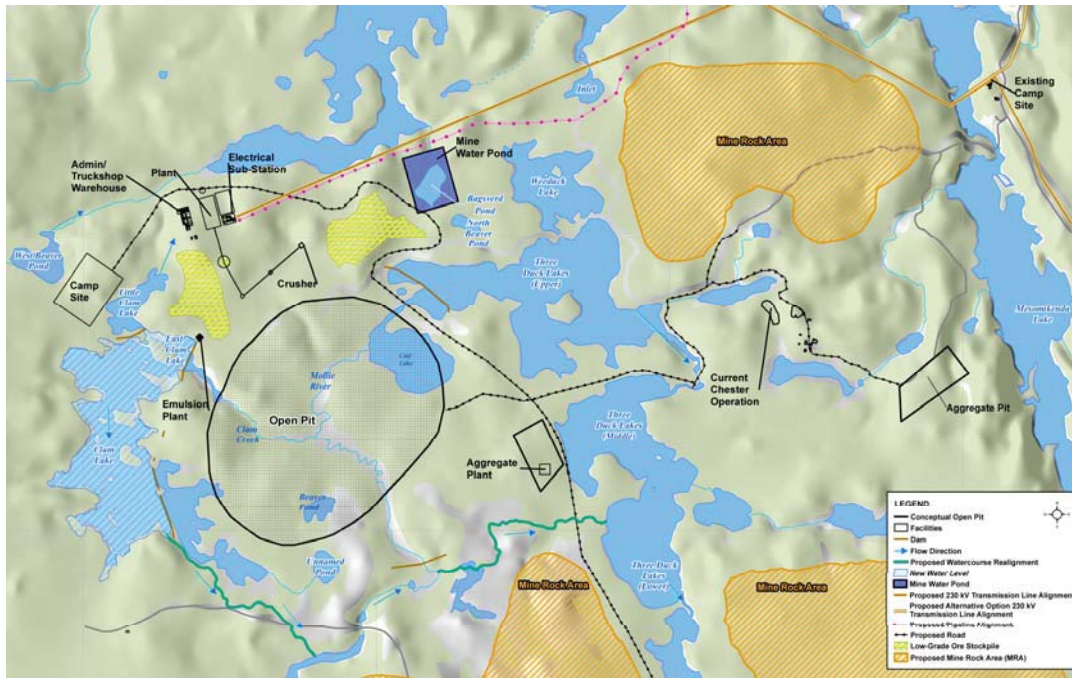
- › 70% not acid-generating, 10% potentially acid-generating, 20% uncertain
- › Further testing is underway to better characterize the rock
- › Any potentially acid-generating rock would be managed appropriately



Source: Detour Gold



Ore Processing Plant, Work Camp and Other Buildings



Ore Processing Plant

Area where gold is recovered from ore using metallurgical techniques



Storage Facility Ore Storage Dome



Accommodations Complex 1,200 workers during construction 500 full-time personnel during operation



Source for all images: Detour Gold

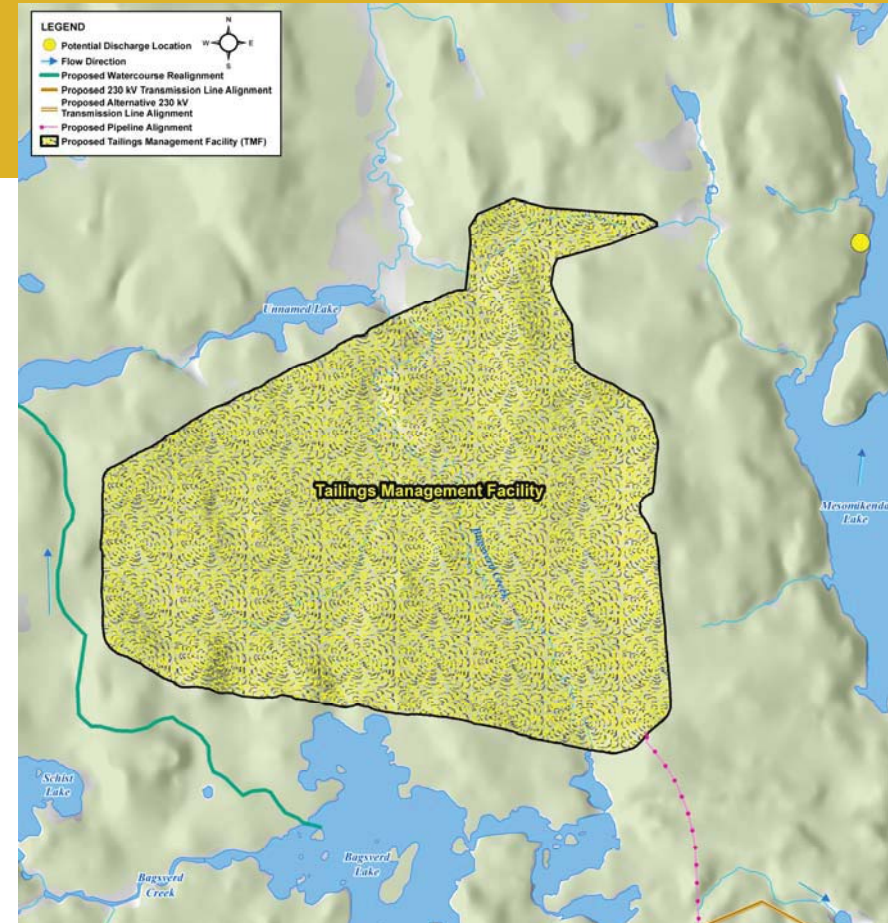
Tailings Management Facility (TMF)

■ What are tailings?

- › Tailings are the materials left over after removing the valuable fraction (i.e., gold)

■ What is the TMF?

- › Facility constructed to manage the tailings
- › Size: approx. 900 hectares
- › Storage capacity: approx. 330 million tonnes of tailings
- › Dams: constructed rockfill dams and naturally high bedrock surface
 - › Dam heights (maximum): 45 to 50 metres above ground surface
- › Water: a large portion of the excess water in the TMF would be recycled for process water
 - › Remaining water would be discharged through a polishing pond to surface water and would meet applicable Federal and Provincial effluent discharge standards
- › Closure: the TMF would be rehabilitated (for example re-vegetated) at closure based on the Ministry of Northern Development and Mines approved Closure Plan



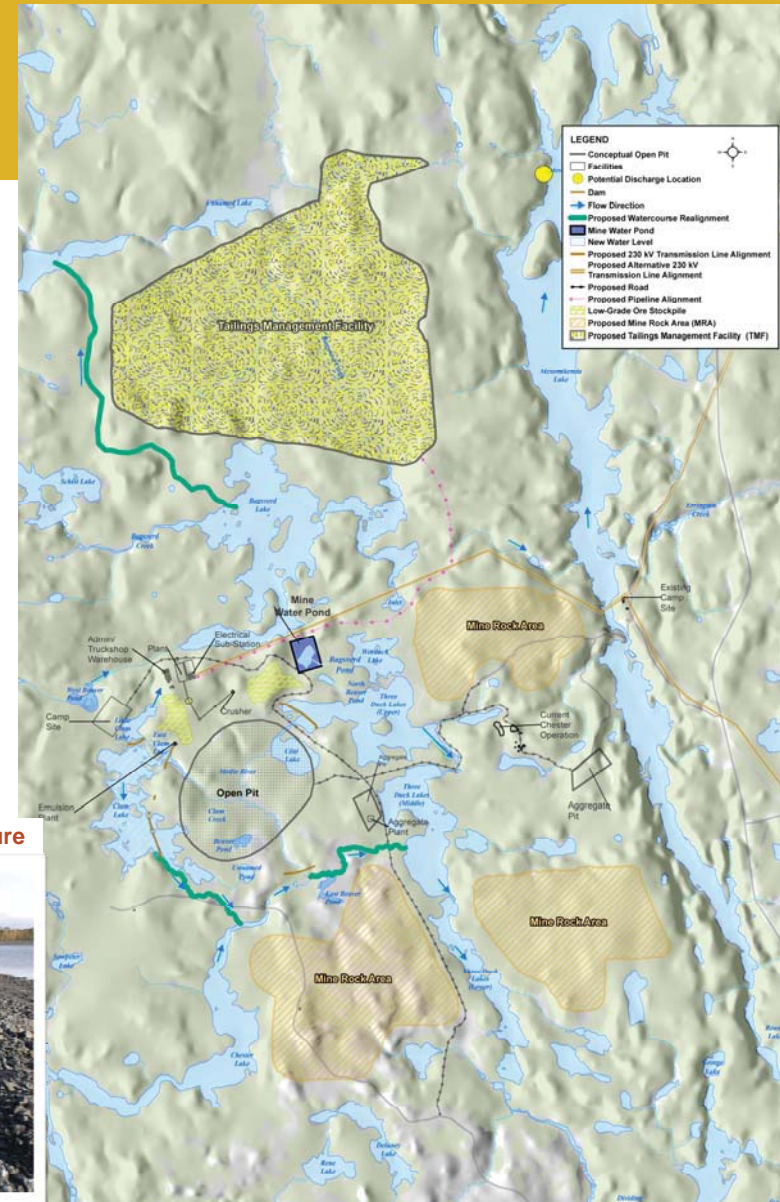
Examples of Tailings Management Facilities



Water Management Facilities

- **Purpose:**
 - › Maximize water reclaimed/recycled to the ore processing plant
 - › Minimize the effluent discharge points and amount discharged
 - › Optimize effluent quality so as to not adversely affect natural water systems
- **Site water flows that would be managed include:**
 - › mine water from the open pit
 - › water associated with the treated tailings effluent, as well as precipitation collected within the Tailings Management Facility
 - › water from truck wash bays and other minor sources
 - › runoff collected at the mine rock areas and low-grade ore stockpiles
 - › overburden seepage from pit perimeter ditch
 - › treated domestic sewage water
 - › general site area runoff and seepage

Example of water management structure

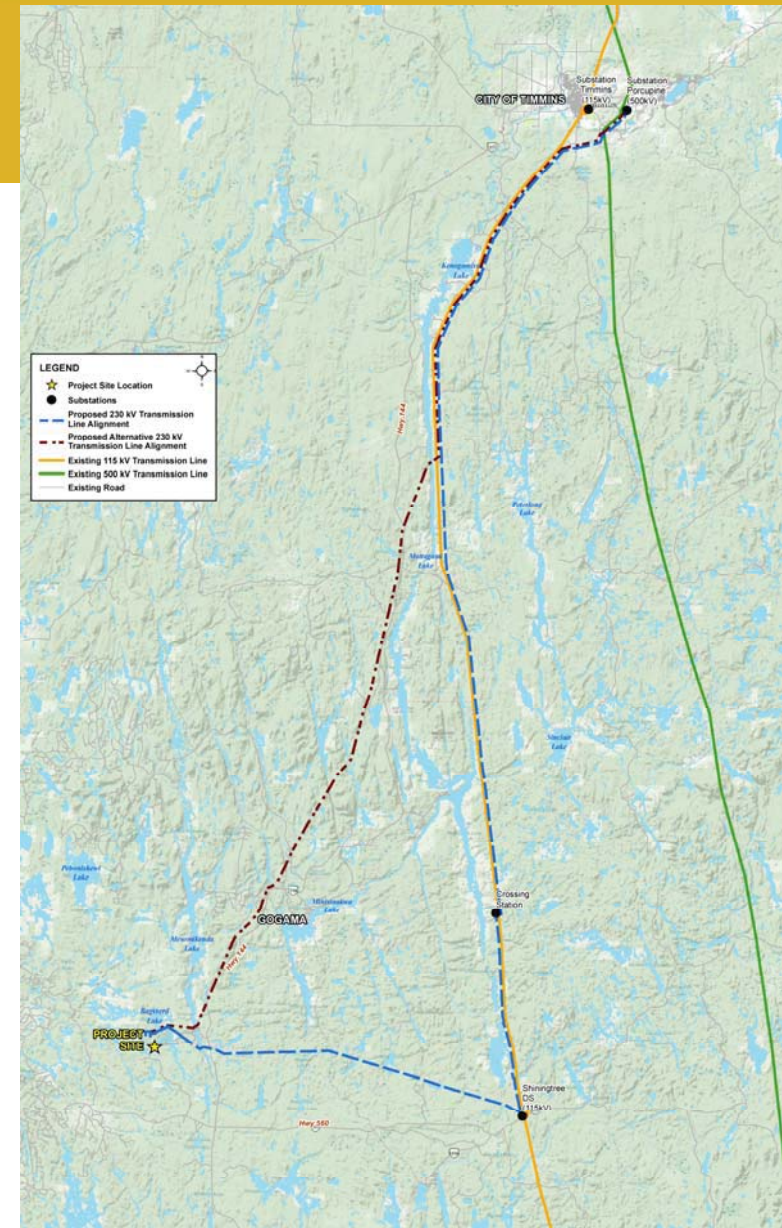


Power Transmission Line

- **Power for Project operations would be powered by a new 230 kilovolt transmission line connected to the existing HydroOne Network in Timmins at the Porcupine Substation**
- **Proposed alignment**
 - First segment, approx. 120 kilometres long, would parallel an existing 115 kilovolt transmission line from Timmins to Shining Tree
 - Second segment, approx. 40 kilometres long, would be constructed within an existing right-of-way from the Shining Tree Substation to the Project site
- **Proposed alternative alignment**
 - More direct (shorter) route (cross-country) is being evaluated and may be incorporated into the environmental assessment if the evaluation looks promising



Source: Detour Gold



Environmental Assessment

■ What is an environmental assessment?

- › It is a planning and decision-making tool. The objectives of an environmental assessment are to:
 - › minimize or avoid adverse environmental effects before they occur
 - › incorporate environmental factors into decision making
- › Consultation is an important aspect of the environmental assessment process. Members of the public can participate at various stages of the environmental assessment process.

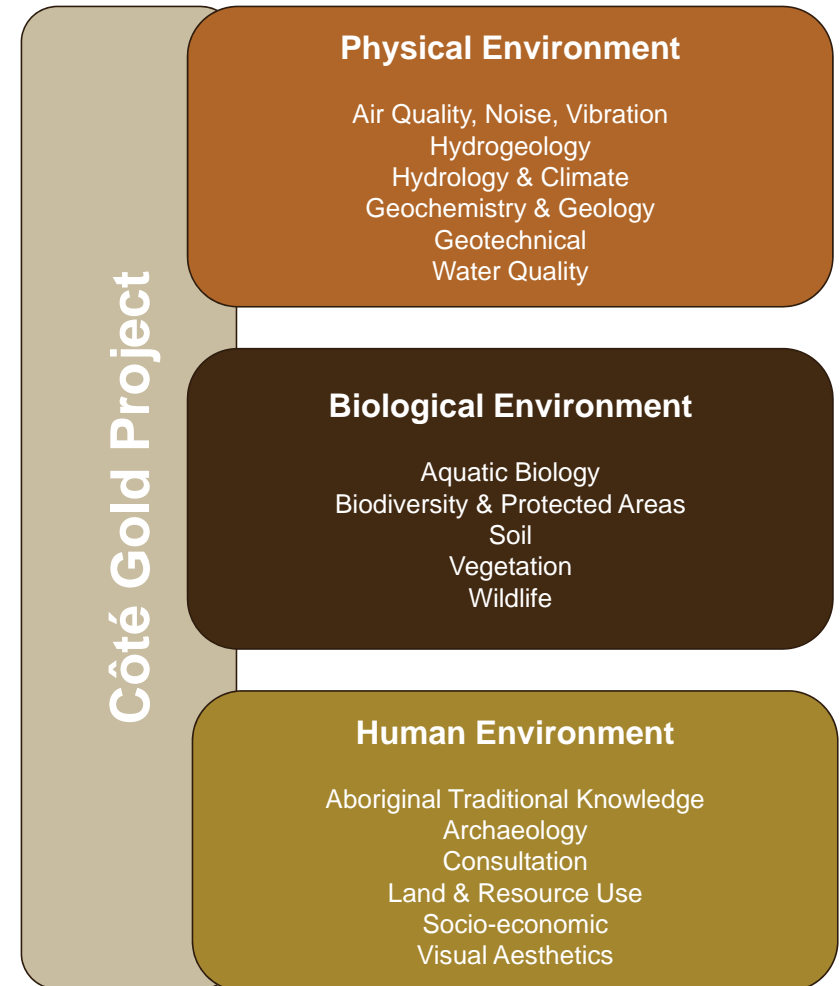
■ Project anticipated to require a Federal environmental assessment under the *Canadian Environmental Assessment Act, 2012*.

- › The Federal "Regulation Designating Physical Activities" identifies the physical activities that make up the designated projects that could require a Federal environmental assessment
 - › For more information on the Federal environmental assessment visit the Canadian Environmental Assessment Agency website
<http://www.ceaa-acee.gc.ca/>
- ## ■ Several aspects of the Project are anticipated to require completion of Provincial environmental assessment(s) including:
1. Construction and operation of a 230 kilovolt transmission line
 2. Potential disposition of Crown resources



Managing Environmental Effects

- The environmental assessment will be based on the proposed Project, existing environmental conditions, regulatory requirements and proposed mitigation measures
- Evaluation of Project effects in the physical, biological and human environments
- Includes the following steps:
 - › Prediction of the effects of the Project on the physical and biological environment , effects on Aboriginal peoples as well as the socio-economic conditions
 - › Evaluation of Project alternatives, management practices and mitigation measures which would avoid or minimize adverse Project effects and enhance positive effects
 - › Determination of the level of significance of each potential effects that remains after the application of the proposed mitigation measures



Côté Gold Project: Consultation

Aboriginal, Stakeholders and Government

First Nation and Métis groups (as identified by Federal and Provincial governments)

Gogama and other regional communities (Sudbury, Timmins)

Provincial and federal governments

Neighbours and adjacent land owners (Mesomikenda cottagers, mining interests, trappers, hunters)

Interested stakeholders (Economic development agencies, businesses, forestry companies,

Non-governmental environmental organizations (Northwatch, Mining Watch Canada)

Consultation Activities and Information Sources

Meetings and open houses

Site tours

Newsletters/Newspaper notices

Project website (www.iamgold.com)

Direct mail/e-mail to project mailing list



Côté Gold Project: Local Partnerships and Employment

- Exploration Agreement with local First Nations
- Currently employs 50 people at the Côté Gold Project site; half of whom live in Gogama and surrounding communities
- Local contracts in place for services such as: hauling, clearing brush, making roads, pipe fusing, making core boxes, and carpenters
- IAMGOLD anticipates to employ approx. 1,200 workers during the construction phase and approx. 500 workers during the operations phase of the Project



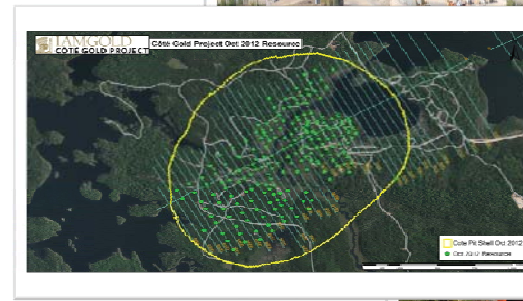
Côté Gold Project: Current Activities on Site

■ Drilling

- › Continue to define the resource
- › Drill program is down from a peak of 13 drills and will continue through the winter with a limited number of drills

■ Additional Baseline Work

- › Aboriginal traditional knowledge and land use
- › Air Quality
- › Archaeology
- › Aquatics and Terrestrial
- › Geochemistry
- › Groundwater and Surface Water
- › Socio-economics
- › Visual Aesthetics



Côté Gold Project: Future Activities

■ Environmental Assessments

- › Federal environmental assessment
 - › Draft Project Description submitted to federal government agencies on February 1, 2013
 - › Final Project Description is to be submitted to federal government agencies in March 2013
- › Provincial environmental assessment for a 230 kilovolt transmission line
 - › Coordinating with the provincial representatives to determine which process will be followed
 - › Anticipating commencement of an Individual Environmental Assessment in March 2013
- › Several things still in consideration including:
 - › Location of facilities
 - › Water management
 - › Transmission line

■ Continue exploration drilling over the winter of 2013

■ Engage and consult with Aboriginal people, regional communities and stakeholders



Côte Gold Project: Community and Environment Team

Steve Letwin

President & Chief Executive Officer

Bob Carreau

Senior Vice President Health, Safety
and Sustainability

Aaron Steeghs

Manager, Corporate Social
Responsibility

Steven Woolfenden

Manager, Corporate Environmental
Assessment and Approvals

Cheryl Naveau

First Nation Liaison and Public
Relations

Dave Brown

Manager, Environmental Services

Bruce Peters

Manager, Infrastructure and Logistics



Côté Gold Project: Participate!

- **Your concerns about the Côté Gold Project are important to us.**
- **How do you want to be involved?**
- **Are there others who should be involved?**
- **Learn More: www.iamgold.com**

- **Contact Us . . .**

- › **Cheryl Naveau**
First Nation Liaison and Public Relations
Tel: 705-269-0010 ext 205
E-mail: Cheryl_Naveau@iamgold.com
- › **Aaron Steeghs**
Manager, Corporate Social Responsibility
Tel: 416-933-4961
E-mail: Aaron_Steeghs@iamgold.com



Côté Gold Project: Participate!

- **Your concerns about the Côté Gold Project are important to us.**
- **How do you want to be involved?**
- **Are there others who should be involved?**
- **Learn More: www.iamgold.com**
- **Contact Us . . .**
 - › **Steven Woolfenden**
Manager, Corporate Environmental Assessment and Approvals
Tel: 416-594-2884
E-mail: Steven_Woolfenden@iamgold.com
 - › **Cheryl Naveau**
First Nation Liaison and Public Relations
Tel: 705-269-0010 ext 205
E-mail: Cheryl_Naveau@iamgold.com



APPENDIX C
COMMENT FORMS (COMPLETED)

Your comments on the proposed Côté Gold Project are important to us and will be used in the planning and development of this proposed Project.

1. Which Open House did you attend?

- Timmins (February 26, 2013)
 Gogama (February 27, 2013)
 Sudbury (February 28, 2013)

2. How did you hear about this Open House?

- Newspaper advertisement
 Invitation
 Website
 From a neighbour / friend
 Other: _____

3. How would you rate the following about this Open House (circle number)?

| | Poor | ←————→ | | | Excellent | Comments |
|--|------|--------|---|---|-----------|----------|
| Location of the Open House | 1 | 2 | 3 | 4 | 5 | |
| Time of day it was held | 1 | 2 | 3 | 4 | 5 | |
| Length of the session | 1 | 2 | 3 | 4 | 5 | |
| Information provided | 1 | 2 | 3 | 4 | 5 | |
| Your opportunity to comment/be heard | 1 | 2 | 3 | 4 | 5 | |
| Your opportunity to have your questions answered | 1 | 2 | 3 | 4 | 5 | |

4. Do you have any comments, interests or suggestions related to the Côté Gold Project in general?

5. Do you have information that might be relevant about the environment in or adjacent to the proposed mine area?

AS A RECLAMATION CONTRACTOR, WE WOULD LIKE TO BE INVOLVED IN YOUR SEEDING, PLANTING, EROSION CONTROL AND LAND RECLAMATION PROJECTS

6. Additional questions or comments (if you would like a reply please provide your contact information below)?

7. Do you want to be added to our mailing list for future information about the Project?



Thank you for your input!

Completed forms can be left with a member of our team or faxed/mailed to:

IAMGOLD Corporation – Côté Gold Project
3 Mesomikenda Lake Road, P.O. Box 100, Gogama, ON P0M 1W0
E-mail: cotegold@iamgold.com; Fax: (705) 269-1199

Information will be collected and used in accordance with the Environmental Assessment Act, and solely for the purpose of assisting the IAMGOLD Corporation in meeting environmental assessment and approval requirements. This material will be maintained on file for use during the study and may be included in Project documentation. **All comments will become part of the public record.** Personal information is protected under authority of the Freedom of Information and Protection of Privacy Act, Section 32, and is used solely for the purpose of completing this environmental assessment. Individuals will not be identified in any public documents or used for any purpose other than this Project.

Your comments on the proposed Côté Gold Project are important to us and will be used in the planning and development of this proposed Project.

1. Which Open House did you attend?

- Timmins (February 26, 2013)
 Gogama (February 27, 2013)
 Sudbury (February 28, 2013)

2. How did you hear about this Open House?

- Newspaper advertisement
 Invitation
 Website
 From a neighbour / friend
 Other: _____

3. How would you rate the following about this Open House (circle number)?

| | Poor | ← | → | Excellent | |
|--|------|---|---|-----------|--|
| Location of the Open House | 1 | 2 | 3 | 4 | |
| Time of day it was held | 1 | 2 | 3 | 4 | |
| Length of the session | 1 | 2 | 3 | 4 | |
| Information provided | 1 | 2 | 3 | 4 | |
| Your opportunity to comment/be heard | 1 | 2 | 3 | 4 | |
| Your opportunity to have your questions answered | 1 | 2 | 3 | 4 | |

4. Do you have any comments, interests or suggestions related to the Côté Gold Project in general?

5. Do you have information that might be relevant about the environment in or adjacent to the proposed mine area?

6. Additional questions or comments (if you would like a reply please provide your contact information below)?

7. Do you want to be added to our mailing list for future information about the Project?

Name: _____

Organization or Affiliation (if applicable): _____

Street Address: _____

Municipality: _____

Postal Code: _____

Phone: _____

Email: _____

Thank you for your input!

Completed forms can be left with a member of our team or faxed/mailed to:

IAMGOLD Corporation – Côté Gold Project
3 Mesomikenda Lake Road, P.O. Box 100, Gogama, ON P0M 1W0
E-mail: cotegold@iamgold.com; Fax: (705) 269-1199

*Information will be collected and used in accordance with the Environmental Assessment Act, and solely for the purpose of assisting the IAMGOLD Corporation in meeting environmental assessment and approval requirements. This material will be maintained on file for use during the study and may be included in Project documentation. **All comments will become part of the public record.** Personal information is protected under authority of the Freedom of Information and Protection of Privacy Act, Section 32, and is used solely for the purpose of completing this environmental assessment. Individuals will not be identified in any public documents or used for any purpose other than this Project.*

Your comments on the proposed Côté Gold Project are important to us and will be used in the planning and development of this proposed Project.

1. Which Open House did you attend?

- Timmins (February 26, 2013)
 Gogama (February 27, 2013)
 Sudbury (February 28, 2013)

2. How did you hear about this Open House?

- Newspaper advertisement
 Invitation
 Website
 From a neighbour / friend
 Other: _____

3. How would you rate the following about this Open House (circle number)?

| | Poor | ←————→ | | | Excellent | Comments |
|--|------|--------|---|---|-----------|----------|
| Location of the Open House | 1 | 2 | 3 | 4 | 5 | |
| Time of day it was held | 1 | 2 | 3 | 4 | 5 | |
| Length of the session | 1 | 2 | 3 | 4 | 5 | |
| Information provided | 1 | 2 | 3 | 4 | 5 | |
| Your opportunity to comment/be heard | 1 | 2 | 3 | 4 | 5 | |
| Your opportunity to have your questions answered | 1 | 2 | 3 | 4 | 5 | |

4. Do you have any comments, interests or suggestions related to the Côté Gold Project in general?

5. Do you have information that might be relevant about the environment in or adjacent to the proposed mine area?

The proposed tailings pond is adjacent to and discharges through Intake Protection Zone 3 into Mesomikenda Lake which is the headwaters of the Mattagami River which is the source of drinking water for the City of Timmins!

6. Additional questions or comments (if you would like a reply please provide your contact information below)?

All of our Technical Reports, the Assessment Report and the Proposed Source Protection Plan are posted on the Drinking Water Source Protection website at www.dwsp.ca

7. Do you want to be added to our mailing list for future information about the Project?

Thank you for your input!

Completed forms can be left with a member of our team or faxed/mailed to:

IAMGOLD Corporation – Côté Gold Project
3 Mesomikenda Lake Road, P.O. Box 100, Gogama, ON P0M 1W0
E-mail: cotegold@iamgold.com; Fax: (705) 269-1199

Information will be collected and used in accordance with the Environmental Assessment Act, and solely for the purpose of assisting the IAMGOLD Corporation in meeting environmental assessment and approval requirements. This material will be maintained on file for use during the study and may be included in Project documentation. **All comments will become part of the public record.** Personal information is protected under authority of the Freedom of Information and Protection of Privacy Act, Section 32, and is used solely for the purpose of completing this environmental assessment. Individuals will not be identified in any public documents or used for any purpose other than this Project.

Your comments on the proposed Côté Gold Project are important to us and will be used in the planning and development of this proposed Project.

1. Which Open House did you attend?

- Timmins (February 26, 2013)
 Gogama (February 27, 2013)
 Sudbury (February 28, 2013)

2. How did you hear about this Open House?

- Newspaper advertisement
 Invitation
 Website
 From a neighbour / friend
 Other: _____

3. How would you rate the following about this Open House (circle number)?

| | Poor | ←————→ | | | Excellent | Comments |
|--|------|--------|---|---|-----------|----------|
| Location of the Open House | 1 | 2 | 3 | 4 | 5 | |
| Time of day it was held | 1 | 2 | 3 | 4 | 5 | |
| Length of the session | 1 | 2 | 3 | 4 | 5 | |
| Information provided | 1 | 2 | 3 | 4 | 5 | |
| Your opportunity to comment/be heard | 1 | 2 | 3 | 4 | 5 | |
| Your opportunity to have your questions answered | 1 | 2 | 3 | 4 | 5 | |

4. Do you have any comments, interests or suggestions related to the Côté Gold Project in general?

5. Do you have information that might be relevant about the environment in or adjacent to the proposed mine area?

6. Additional questions or comments (if you would like a reply please provide your contact information below)?

7. Do you want to be added to our mailing list for future information about the Project?



Thank you for your input!

Completed forms can be left with a member of our team or faxed/mailed to:

IAMGOLD Corporation – Côté Gold Project
3 Mesomikenda Lake Road, P.O. Box 100, Gogama, ON P0M 1W0
E-mail: cotegold@iamgold.com; Fax: (705) 269-1199

*Information will be collected and used in accordance with the Environmental Assessment Act, and solely for the purpose of assisting the IAMGOLD Corporation in meeting environmental assessment and approval requirements. This material will be maintained on file for use during the study and may be included in Project documentation. **All comments will become part of the public record.** Personal information is protected under authority of the Freedom of Information and Protection of Privacy Act, Section 32, and is used solely for the purpose of completing this environmental assessment. Individuals will not be identified in any public documents or used for any purpose other than this Project.*

Your comments on the proposed Côté Gold Project are important to us and will be used in the planning and development of this proposed Project.

1. Which Open House did you attend?

- Timmins (February 26, 2013)
 Gogama (February 27, 2013)
 Sudbury (February 28, 2013)

2. How did you hear about this Open House?

- Newspaper advertisement Invitation Website
 From a neighbour / friend Other: _____

3. How would you rate the following about this Open House (circle number)?

| Location of the Open House | Poor ←————→ Excellent | | | | | Comments |
|--|-----------------------|---|---|---|---|----------|
| | 1 | 2 | 3 | 4 | 5 | |
| Location of the Open House | 1 | 2 | 3 | 4 | 5 | |
| Time of day it was held | 1 | 2 | 3 | 4 | 5 | |
| Length of the session | 1 | 2 | 3 | 4 | 5 | |
| Information provided | 1 | 2 | 3 | 4 | 5 | |
| Your opportunity to comment/be heard | 1 | 2 | 3 | 4 | 5 | |
| Your opportunity to have your questions answered | 1 | 2 | 3 | 4 | 5 | |

4. Do you have any comments, interests or suggestions related to the Côté Gold Project in general?

My concern is tailing and discharge and what is going to be after it's done

5. Do you have information that might be relevant about the environment in or adjacent to the proposed mine area?

6. Additional questions or comments (if you would like a reply please provide your contact information below)?

7. Do you want to be added to our mailing list for future information about the Project?



Thank you for your input!

Completed forms can be left with a member of our team or faxed/mailed to:

IAMGOLD Corporation – Côté Gold Project
3 Mesomikenda Lake Road, P.O. Box 100, Gogama, ON P0M 1W0
E-mail: cotegold@iamgold.com; Fax: (705) 269-1199

*Information will be collected and used in accordance with the Environmental Assessment Act, and solely for the purpose of assisting the IAMGOLD Corporation in meeting environmental assessment and approval requirements. This material will be maintained on file for use during the study and may be included in Project documentation. **All comments will become part of the public record.** Personal information is protected under authority of the Freedom of Information and Protection of Privacy Act, Section 32, and is used solely for the purpose of completing this environmental assessment. Individuals will not be identified in any public documents or used for any purpose other than this Project.*

Your comments on the proposed Côté Gold Project are important to us and will be used in the planning and development of this proposed Project.

1. Which Open House did you attend?

- Timmins (February 26, 2013)
 Gogama (February 27, 2013)
 Sudbury (February 28, 2013)

2. How did you hear about this Open House?

- Newspaper advertisement Invitation Website
 From a neighbour / friend Other: Wabun tribal council

3. How would you rate the following about this Open House (circle number)?

| Location of the Open House | Poor ←————→ Excellent | | | | | Comments |
|--|-----------------------|---|---|---|---|----------|
| | 1 | 2 | 3 | 4 | 5 | |
| Location of the Open House | 1 | 2 | 3 | 4 | 5 | |
| Time of day it was held | 1 | 2 | 3 | 4 | 5 | |
| Length of the session | 1 | 2 | 3 | 4 | 5 | |
| Information provided | 1 | 2 | 3 | 4 | 5 | |
| Your opportunity to comment/be heard | 1 | 2 | 3 | 4 | 5 | |
| Your opportunity to have your questions answered | 1 | 2 | 3 | 4 | 5 | |

4. Do you have any comments, interests or suggestions related to the Côté Gold Project in general?

5. Do you have information that might be relevant about the environment in or adjacent to the proposed mine area?

6. Additional questions or comments (if you would like a reply please provide your contact information below)?

7. Do you want to be added to our mailing list for future information about the Project?



Thank you for your input!

Completed forms can be left with a member of our team or faxed/mailed to:

IAMGOLD Corporation – Côté Gold Project
3 Mesomikenda Lake Road, P.O. Box 100, Gogama, ON P0M 1W0
E-mail: cotegold@iamgold.com; Fax: (705) 269-1199

*Information will be collected and used in accordance with the Environmental Assessment Act, and solely for the purpose of assisting the IAMGOLD Corporation in meeting environmental assessment and approval requirements. This material will be maintained on file for use during the study and may be included in Project documentation. **All comments will become part of the public record.** Personal information is protected under authority of the Freedom of Information and Protection of Privacy Act, Section 32, and is used solely for the purpose of completing this environmental assessment. Individuals will not be identified in any public documents or used for any purpose other than this Project.*

Your comments on the proposed Côté Gold Project are important to us and will be used in the planning and development of this proposed Project.

1. Which Open House did you attend?

- Timmins (February 26, 2013)
 Gogama (February 27, 2013)
 Sudbury (February 28, 2013)

2. How did you hear about this Open House?

- Newspaper advertisement
 Invitation
 Website
 From a neighbour / friend
 Other: _____

3. How would you rate the following about this Open House (circle number)?

| Location of the Open House | Poor ←————→ Excellent | | | | | Comments |
|--|-----------------------|---|---|---|---|----------|
| | 1 | 2 | 3 | 4 | 5 | |
| Location of the Open House | 1 | 2 | 3 | 4 | 5 | |
| Time of day it was held | 1 | 2 | 3 | 4 | 5 | |
| Length of the session | 1 | 2 | 3 | 4 | 5 | |
| Information provided | 1 | 2 | 3 | 4 | 5 | |
| Your opportunity to comment/be heard | 1 | 2 | 3 | 4 | 5 | |
| Your opportunity to have your questions answered | 1 | 2 | 3 | 4 | 5 | |

4. Do you have any comments, interests or suggestions related to the Côté Gold Project in general?

5. Do you have information that might be relevant about the environment in or adjacent to the proposed mine area?

6. Additional questions or comments (if you would like a reply please provide your contact information below)?

7. Do you want to be added to our mailing list for future information about the Project?



Thank you for your input!

Completed forms can be left with a member of our team or faxed/mailed to:

IAMGOLD Corporation – Côté Gold Project
3 Mesomikenda Lake Road, P.O. Box 100, Gogama, ON P0M 1W0
E-mail: coteqgold@iamgold.com; Fax: (705) 269-1199

*Information will be collected and used in accordance with the Environmental Assessment Act, and solely for the purpose of assisting the IAMGOLD Corporation in meeting environmental assessment and approval requirements. This material will be maintained on file for use during the study and may be included in Project documentation. **All comments will become part of the public record.** Personal information is protected under authority of the Freedom of Information and Protection of Privacy Act, Section 32, and is used solely for the purpose of completing this environmental assessment. Individuals will not be identified in any public documents or used for any purpose other than this Project.*

Your comments on the proposed Côté Gold Project are important to us and will be used in the planning and development of this proposed Project.

1. Which Open House did you attend?

- Timmins (February 26, 2013)
 Gogama (February 27, 2013)
 Sudbury (February 28, 2013)

2. How did you hear about this Open House?

- Newspaper advertisement
 Invitation
 Website
 From a neighbour / friend
 Other: _____

3. How would you rate the following about this Open House (circle number)?

| Location of the Open House | Poor ←————→ Excellent | | | | | Comments |
|--|-----------------------|---|---|---|---|----------|
| | 1 | 2 | 3 | 4 | 5 | |
| Time of day it was held | 1 | 2 | 3 | 4 | 5 | |
| Length of the session | 1 | 2 | 3 | 4 | 5 | |
| Information provided | 1 | 2 | 3 | 4 | 5 | |
| Your opportunity to comment/be heard | 1 | 2 | 3 | 4 | 5 | |
| Your opportunity to have your questions answered | 1 | 2 | 3 | 4 | 5 | |

4. Do you have any comments, interests or suggestions related to the Côté Gold Project in general?

Environmental Concerns, Not far waste water
 dump in Mesonekande Lake ~~with~~ dump in
 Minisinkwa & Mattagami Lake, Mattagami
 River, fish, moose, birds, all wildlife is a
 Big concern.

5. Do you have information that might be relevant about the environment in or adjacent to the proposed mine area?

I have a cottage on Mattagami Lake across from the reserve

6. Additional questions or comments (if you would like a reply please provide your contact information below)?

7. Do you want to be added to our mailing list for future information about the Project?

Thank you for your input!

Completed forms can be left with a member of our team or faxed/mailed to:

IAMGOLD Corporation – Côté Gold Project
3 Mesomikenda Lake Road, P.O. Box 100, Gogama, ON P0M 1W0
E-mail: cotegold@iamgold.com; Fax: (705) 269-1199

*Information will be collected and used in accordance with the Environmental Assessment Act, and solely for the purpose of assisting the IAMGOLD Corporation in meeting environmental assessment and approval requirements. This material will be maintained on file for use during the study and may be included in Project documentation. **All comments will become part of the public record.** Personal information is protected under authority of the Freedom of Information and Protection of Privacy Act, Section 32, and is used solely for the purpose of completing this environmental assessment. Individuals will not be identified in any public documents or used for any purpose other than this Project.*

Your comments on the proposed Côté Gold Project are important to us and will be used in the planning and development of this proposed Project.

1. Which Open House did you attend?

- Timmins (February 26, 2013)
 Gogama (February 27, 2013)
 Sudbury (February 28, 2013)

2. How did you hear about this Open House?

- Newspaper advertisement Invitation Website
 From a neighbour / friend Other: _____

3. How would you rate the following about this Open House (circle number)?

| | Poor | ←————→ | | | Excellent | Comments |
|--|------|--------|---|---|-----------|----------|
| Location of the Open House | 1 | 2 | 3 | 4 | 5 | |
| Time of day it was held | 1 | 2 | 3 | 4 | 5 | |
| Length of the session | 1 | 2 | 3 | 4 | 5 | |
| Information provided | 1 | 2 | 3 | 4 | 5 | |
| Your opportunity to comment/be heard | 1 | 2 | 3 | 4 | 5 | |
| Your opportunity to have your questions answered | 1 | 2 | 3 | 4 | 5 | |

4. Do you have any comments, interests or suggestions related to the Côté Gold Project in general?

5. Do you have information that might be relevant about the environment in or adjacent to the proposed mine area?

6. Additional questions or comments (if you would like a reply please provide your contact information below)?

*HIT LIFE END WHAT HAPPENS TO
PIT.*

7. Do you want to be added to our mailing list for future information about the Project?

Name: _____
Organization or Affiliation (if applicable): _____
Street Address: _____
Municipality: _____
Postal Code: _____
Phone: _____
Email: _____

Thank you for your input!

Completed forms can be left with a member of our team or faxed/mailed to:

IAMGOLD Corporation – Côté Gold Project
3 Mesomikenda Lake Road, P.O. Box 100, Gogama, ON P0M 1W0
E-mail: cotegold@iamgold.com; Fax: (705) 269-1199

*Information will be collected and used in accordance with the Environmental Assessment Act, and solely for the purpose of assisting the IAMGOLD Corporation in meeting environmental assessment and approval requirements. This material will be maintained on file for use during the study and may be included in Project documentation. **All comments will become part of the public record.** Personal information is protected under authority of the Freedom of Information and Protection of Privacy Act, Section 32, and is used solely for the purpose of completing this environmental assessment. Individuals will not be identified in any public documents or used for any purpose other than this Project.*

Your comments on the proposed Côté Gold Project are important to us and will be used in the planning and development of this proposed Project.

1. Which Open House did you attend?

- Timmins (February 26, 2013)
 Gogama (February 27, 2013)
 Sudbury (February 28, 2013)

2. How did you hear about this Open House?

- Newspaper advertisement
 Invitation
 Website
 From a neighbour / friend
 Other: _____

3. How would you rate the following about this Open House (circle number)?

| | Poor | ←————→ | | | Excellent | |
|--|------|--------|---|---|-----------|----------|
| | 1 | 2 | 3 | 4 | 5 | Comments |
| Location of the Open House | 1 | 2 | 3 | 4 | 5 | |
| Time of day it was held | 1 | 2 | 3 | 4 | 5 | |
| Length of the session | 1 | 2 | 3 | 4 | 5 | |
| Information provided | 1 | 2 | 3 | 4 | 5 | |
| Your opportunity to comment/be heard | 1 | 2 | 3 | 4 | 5 | |
| Your opportunity to have your questions answered | 1 | 2 | 3 | 4 | 5 | |

4. Do you have any comments, interests or suggestions related to the Côté Gold Project in general?

5. Do you have information that might be relevant about the environment in or adjacent to the proposed mine area?

6. Additional questions or comments (if you would like a reply please provide your contact information below)?

7. Do you want to be added to our mailing list for future information about the Project?

Name: _____
Organization or Affiliation (if applicable): _____
Street Address: _____
Municipality: _____
Postal Code: _____
Phone: _____
Email: _____

Thank you for your input!

Completed forms can be left with a member of our team or faxed/mailed to:

IAMGOLD Corporation – Côté Gold Project
3 Mesomikenda Lake Road, P.O. Box 100, Gogama, ON P0M 1W0
E-mail: cotegold@iamgold.com; Fax: (705) 269-1199

Information will be collected and used in accordance with the Environmental Assessment Act, and solely for the purpose of assisting the IAMGOLD Corporation in meeting environmental assessment and approval requirements. This material will be maintained on file for use during the study and may be included in Project documentation. All comments will become part of the public record. Personal information is protected under authority of the Freedom of Information and Protection of Privacy Act, Section 32, and is used solely for the purpose of completing this environmental assessment. Individuals will not be identified in any public documents or used for any purpose other than this Project.

Your comments on the proposed Côté Gold Project are important to us and will be used in the planning and development of this proposed Project.

1. Which Open House did you attend?

- Timmins (February 26, 2013)
 Gogama (February 27, 2013)
 Sudbury (February 28, 2013)

2. How did you hear about this Open House?

- Newspaper advertisement
 Invitation
 Website
 From a neighbour / friend
 Other: _____

3. How would you rate the following about this Open House (circle number)?

| Location of the Open House | Poor ←————→ Excellent | | | | | Comments |
|--|-----------------------|---|---|---|---|----------|
| | 1 | 2 | 3 | 4 | 5 | |
| Location of the Open House | 1 | 2 | 3 | 4 | 5 | |
| Time of day it was held | 1 | 2 | 3 | 4 | 5 | |
| Length of the session | 1 | 2 | 3 | 4 | 5 | |
| Information provided | 1 | 2 | 3 | 4 | 5 | |
| Your opportunity to comment/be heard | 1 | 2 | 3 | 4 | 5 | |
| Your opportunity to have your questions answered | 1 | 2 | 3 | 4 | 5 | |

4. Do you have any comments, interests or suggestions related to the Côté Gold Project in general?

5. Do you have information that might be relevant about the environment in or adjacent to the proposed mine area?

6. Additional questions or comments (if you would like a reply please provide your contact information below)?

7. Do you want to be added to our mailing list for future information about the Project?



Thank you for your input!

Completed forms can be left with a member of our team or faxed/mailed to:

IAMGOLD Corporation – Côté Gold Project
3 Mesomikenda Lake Road, P.O. Box 100, Gogama, ON P0M 1W0
E-mail: cotegold@iamgold.com; Fax: (705) 269-1199

*Information will be collected and used in accordance with the Environmental Assessment Act, and solely for the purpose of assisting the IAMGOLD Corporation in meeting environmental assessment and approval requirements. This material will be maintained on file for use during the study and may be included in Project documentation. **All comments will become part of the public record.** Personal information is protected under authority of the Freedom of Information and Protection of Privacy Act, Section 32, and is used solely for the purpose of completing this environmental assessment. Individuals will not be identified in any public documents or used for any purpose other than this Project.*

Your comments on the proposed Côté Gold Project are important to us and will be used in the planning and development of this proposed Project.

1. Which Open House did you attend?

- Timmins (February 26, 2013)
 Gogama (February 27, 2013)
 Sudbury (February 28, 2013)

2. How did you hear about this Open House?

- Newspaper advertisement
 Invitation
 Website
 From a neighbour / friend
 Other: _____

3. How would you rate the following about this Open House (circle number)?

| | 1 | 2 | 3 | 4 | 5 | Comments |
|--|---|---|---|---|---|----------|
| Location of the Open House | 1 | 2 | 3 | 4 | 5 | |
| Time of day it was held | 1 | 2 | 3 | 4 | 5 | |
| Length of the session | 1 | 2 | 3 | 4 | 5 | |
| Information provided | 1 | 2 | 3 | 4 | 5 | |
| Your opportunity to comment/be heard | 1 | 2 | 3 | 4 | 5 | |
| Your opportunity to have your questions answered | 1 | 2 | 3 | 4 | 5 | |

4. Do you have any comments, interests or suggestions related to the Côté Gold Project in general?

5. Do you have information that might be relevant about the environment in or adjacent to the proposed mine area?

6. Additional questions or comments (if you would like a reply please provide your contact information below)?

7. Do you want to be added to our mailing list for future information about the Project?



Thank you for your input!

Completed forms can be left with a member of our team or faxed/mailed to:

IAMGOLD Corporation – Côté Gold Project
3 Mesomikenda Lake Road, P.O. Box 100, Gogama, ON P0M 1W0
E-mail: cotegold@iamgold.com; Fax: (705) 269-1199

*Information will be collected and used in accordance with the Environmental Assessment Act, and solely for the purpose of assisting the IAMGOLD Corporation in meeting environmental assessment and approval requirements. This material will be maintained on file for use during the study and may be included in Project documentation. **All comments will become part of the public record.** Personal information is protected under authority of the Freedom of Information and Protection of Privacy Act, Section 32, and is used solely for the purpose of completing this environmental assessment. Individuals will not be identified in any public documents or used for any purpose other than this Project.*



COMMENT FORM
draft Project Description, Côté Gold Project

Your comments on the proposed Côté Gold Project are important to us and will be used in the planning and development of this proposed Project.

1. Which Open House did you attend?

- Timmins (February 26, 2013)
- Gogama (February 27, 2013)
- Sudbury (February 28, 2013)

2. How did you hear about this Open House?

- Newspaper advertisement
- Invitation
- Website
- From a neighbour / friend
- Other: _____

3. How would you rate the following about this Open House (circle number)?

| | Poor | ←————→ | | | Excellent | Comments |
|--|------|--------|---|---|-----------|----------|
| Location of the Open House | 1 | 2 | 3 | 4 | 5 | |
| Time of day it was held | 1 | 2 | 3 | 4 | 5 | |
| Length of the session | 1 | 2 | 3 | 4 | 5 | |
| Information provided | 1 | 2 | 3 | 4 | 5 | |
| Your opportunity to comment/be heard | 1 | 2 | 3 | 4 | 5 | |
| Your opportunity to have your questions answered | 1 | 2 | 3 | 4 | 5 | |

4. Do you have any comments, interests or suggestions related to the Côté Gold Project in general?

5. Do you have information that might be relevant about the environment in or adjacent to the proposed mine area?

6. Additional questions or comments (if you would like a reply please provide your contact information below)?

7. Do you want to be added to our mailing list for future information about the Project?



Thank you for your input!

Completed forms can be left with a member of our team or faxed/mailed to:

IAMGOLD Corporation – Côté Gold Project
3 Mesomikenda Lake Road, P.O. Box 100, Gogama, ON P0M 1W0
E-mail: cotegold@iamgold.com; Fax: (705) 269-1199

*Information will be collected and used in accordance with the Environmental Assessment Act, and solely for the purpose of assisting the IAMGOLD Corporation in meeting environmental assessment and approval requirements. This material will be maintained on file for use during the study and may be included in Project documentation. **All comments will become part of the public record.** Personal information is protected under authority of the Freedom of Information and Protection of Privacy Act, Section 32, and is used solely for the purpose of completing this environmental assessment. Individuals will not be identified in any public documents or used for any purpose other than this Project.*

Your comments on the proposed Côté Gold Project are important to us and will be used in the planning and development of this proposed Project.

1. Which Open House did you attend?

- Timmins (February 26, 2013)
 Gogama (February 27, 2013)
 Sudbury (February 28, 2013)

2. How did you hear about this Open House?

- Newspaper advertisement
 Invitation
 Website
 From a neighbour / friend
 Other: _____

3. How would you rate the following about this Open House (circle number)?

| | Poor | ←————→ | | | Excellent | Comments |
|--|------|--------|---|---|-----------|--|
| Location of the Open House | 1 | 2 | 3 | 4 | 5 | |
| Time of day it was held | 1 | 2 | 3 | 4 | 5 | |
| Length of the session | 1 | 2 | 3 | 4 | 5 | |
| Information provided | 1 | 2 | 3 | 4 | 5 | STILL PRELIMINARY SO NOT A LOT OF DETAIL YET → SEE *NOTE BELOW |
| Your opportunity to comment/be heard | 1 | 2 | 3 | 4 | 5 | |
| Your opportunity to have your questions answered | 1 | 2 | 3 | 4 | 5 | |

4. Do you have any comments, interests or suggestions related to the Côté Gold Project in general?

*IT IS STILL EARLY IN THE PROJECT SO THERE IS NOT A LOT OF DETAIL IN THE SLIDES (TIME LINE, STAKEHOLDERS CURRENTLY ACTIVE, etc.) THAT IN ITSELF PROVIDED ME WITH INFO ABOUT WHEN MY INVOLVEMENT MAY BEGIN.

5. Do you have information that might be relevant about the environment in or adjacent to the proposed mine area?

I'VE NEVER BEEN TO THE AREA — I'M LOOKING FORWARD TO A SITE VISIT.

6. Additional questions or comments (if you would like a reply please provide your contact information below)?

THERE WAS A LOT OF SLIDES AND I'M HOPING THIS INFO IS AVAILABLE ON THE WEBSITE (THERE WAS NO CLEAR INDICATION OF THAT.) IF I CANNOT FIND IT, I WILL CONTACT CHERYL NAVEAU.

7. Do you want to be added to our mailing list for future information about the Project?



Thank you for your input!

Completed forms can be left with a member of our team or faxed/mailed to:

IAMGOLD Corporation – Côté Gold Project
3 Mesomikenda Lake Road, P.O. Box 100, Gogama, ON P0M 1W0
E-mail: cotegold@iamgold.com; Fax: (705) 269-1199

Information will be collected and used in accordance with the Environmental Assessment Act, and solely for the purpose of assisting the IAMGOLD Corporation in meeting environmental assessment and approval requirements. This material will be maintained on file for use during the study and may be included in Project documentation. **All comments will become part of the public record.** Personal information is protected under authority of the Freedom of Information and Protection of Privacy Act, Section 32, and is used solely for the purpose of completing this environmental assessment. Individuals will not be identified in any public documents or used for any purpose other than this Project.

Your comments on the proposed Côté Gold Project are important to us and will be used in the planning and development of this proposed Project.

1. Which Open House did you attend?

- Timmins (February 26, 2013)
 Gogama (February 27, 2013)
 Sudbury (February 28, 2013)

2. How did you hear about this Open House?

- Newspaper advertisement
 Invitation
 Website
 From a neighbour / friend
 Other: _____

3. How would you rate the following about this Open House (circle number)?

| | Poor ←————→ Excellent | | | | | |
|--|-----------------------|---|---|---|---|--|
| Location of the Open House | 1 | 2 | 3 | 4 | 5 | |
| Time of day it was held | 1 | 2 | 3 | 4 | 5 | |
| Length of the session | 1 | 2 | 3 | 4 | 5 | |
| Information provided | 1 | 2 | 3 | 4 | 5 | |
| Your opportunity to comment/be heard | 1 | 2 | 3 | 4 | 5 | |
| Your opportunity to have your questions answered | 1 | 2 | 3 | 4 | 5 | |

4. Do you have any comments, interests or suggestions related to the Côté Gold Project in general?

As a long time resident of mining in area I can see you have gone to great lengths to make a safe & sustainable production site.

5. Do you have information that might be relevant about the environment in or adjacent to the proposed mine area?

No - It is a beautiful area however, it looks like you have very good plans for low impact on area.

6. Additional questions or comments (if you would like a reply please provide your contact information below)?

7. Do you want to be added to our mailing list for future information about the Project?



Thank you for your input!

Completed forms can be left with a member of our team or faxed/mailed to:

IAMGOLD Corporation – Côté Gold Project
3 Mesomikenda Lake Road, P.O. Box 100, Gogama, ON P0M 1W0
E-mail: cotegold@iamgold.com; Fax: (705) 269-1199

*Information will be collected and used in accordance with the Environmental Assessment Act, and solely for the purpose of assisting the IAMGOLD Corporation in meeting environmental assessment and approval requirements. This material will be maintained on file for use during the study and may be included in Project documentation. **All comments will become part of the public record.** Personal information is protected under authority of the Freedom of Information and Protection of Privacy Act, Section 32, and is used solely for the purpose of completing this environmental assessment. Individuals will not be identified in any public documents or used for any purpose other than this Project.*

Your comments on the proposed Côté Gold Project are important to us and will be used in the planning and development of this proposed Project.

1. Which Open House did you attend?

- Timmins (February 26, 2013)
 Gogama (February 27, 2013)
 Sudbury (February 28, 2013)

2. How did you hear about this Open House?

- Newspaper advertisement
 Invitation
 Website
 From a neighbour / friend
 Other: _____

3. How would you rate the following about this Open House (circle number)?

| | Poor | ←————→ | | | Excellent | |
|--|------|--------|---|---|-----------|--|
| Location of the Open House | 1 | 2 | 3 | 4 | 5 | |
| Time of day it was held | 1 | 2 | 3 | 4 | 5 | |
| Length of the session | 1 | 2 | 3 | 4 | 5 | |
| Information provided | 1 | 2 | 3 | 4 | 5 | |
| Your opportunity to comment/be heard | 1 | 2 | 3 | 4 | 5 | |
| Your opportunity to have your questions answered | 1 | 2 | 3 | 4 | 5 | |

4. Do you have any comments, interests or suggestions related to the Côté Gold Project in general?

5. Do you have information that might be relevant about the environment in or adjacent to the proposed mine area?

6. Additional questions or comments (if you would like a reply please provide your contact information below)?

7. Do you want to be added to our mailing list for future information about the Project?

Name: _____

Organization or Affiliation (if applicable): _____

Street Address: _____

Municipality: _____

Postal Code: _____

Phone: _____

Email: _____

Thank you for your input!

Completed forms can be left with a member of our team or faxed/mailed to:

IAMGOLD Corporation – Côté Gold Project

3 Mesomikenda Lake Road, P.O. Box 100, Gogama, ON P0M 1W0

E-mail: cotegold@iamgold.com; Fax: (705) 269-1199

*Information will be collected and used in accordance with the Environmental Assessment Act, and solely for the purpose of assisting the IAMGOLD Corporation in meeting environmental assessment and approval requirements. This material will be maintained on file for use during the study and may be included in Project documentation. **All comments will become part of the public record.** Personal information is protected under authority of the Freedom of Information and Protection of Privacy Act, Section 32, and is used solely for the purpose of completing this environmental assessment. Individuals will not be identified in any public documents or used for any purpose other than this Project.*

Your comments on the proposed Côté Gold Project are important to us and will be used in the planning and development of this proposed Project.

1. Which Open House did you attend?

- Timmins (February 26, 2013)
 Gogama (February 27, 2013)
 Sudbury (February 28, 2013)

2. How did you hear about this Open House?

- Newspaper advertisement Invitation Website
 From a neighbour / friend Other: _____

3. How would you rate the following about this Open House (circle number)?

| | Poor | ←————→ | | | Excellent | Comments |
|--|------|--------|---|---|-----------|----------|
| Location of the Open House | 1 | 2 | 3 | 4 | 5 | |
| Time of day it was held | 1 | 2 | 3 | 4 | 5 | |
| Length of the session | 1 | 2 | 3 | 4 | 5 | |
| Information provided | 1 | 2 | 3 | 4 | 5 | |
| Your opportunity to comment/be heard | 1 | 2 | 3 | 4 | 5 | |
| Your opportunity to have your questions answered | 1 | 2 | 3 | 4 | 5 | |

4. Do you have any comments, interests or suggestions related to the Côté Gold Project in general?

5. Do you have information that might be relevant about the environment in or adjacent to the proposed mine area?

6. Additional questions or comments (if you would like a reply please provide your contact information below)?

7. Do you want to be added to our mailing list for future information about the Project?



Thank you for your input!

Completed forms can be left with a member of our team or faxed/mailed to:

IAMGOLD Corporation – Côté Gold Project
3 Mesomikenda Lake Road, P.O. Box 100, Gogama, ON P0M 1W0
E-mail: cotegold@iamgold.com; Fax: (705) 269-1199

*Information will be collected and used in accordance with the Environmental Assessment Act, and solely for the purpose of assisting the IAMGOLD Corporation in meeting environmental assessment and approval requirements. This material will be maintained on file for use during the study and may be included in Project documentation. **All comments will become part of the public record.** Personal information is protected under authority of the Freedom of Information and Protection of Privacy Act, Section 32, and is used solely for the purpose of completing this environmental assessment. Individuals will not be identified in any public documents or used for any purpose other than this Project.*

Your comments on the proposed Côté Gold Project are important to us and will be used in the planning and development of this proposed Project.

1. Which Open House did you attend?

- Timmins (February 26, 2013)
 Gogama (February 27, 2013)
 Sudbury (February 28, 2013)

2. How did you hear about this Open House?

- Newspaper advertisement
 Invitation
 Website
 From a neighbour / friend
 Other: _____

3. How would you rate the following about this Open House (circle number)?

| | Poor ←————→ Excellent | | | | | Comments |
|--|-----------------------|---|---|---|---|----------|
| Location of the Open House | 1 | 2 | 3 | 4 | 5 | |
| Time of day it was held | 1 | 2 | 3 | 4 | 5 | |
| Length of the session | 1 | 2 | 3 | 4 | 5 | |
| Information provided | 1 | 2 | 3 | 4 | 5 | |
| Your opportunity to comment/be heard | 1 | 2 | 3 | 4 | 5 | |
| Your opportunity to have your questions answered | 1 | 2 | 3 | 4 | 5 | |

4. Do you have any comments, interests or suggestions related to the Côté Gold Project in general?

5. Do you have information that might be relevant about the environment in or adjacent to the proposed mine area?

6. Additional questions or comments (if you would like a reply please provide your contact information below)?

I have questions regarding effluent discharge into Mesomikenda Lake, an OPS managed reservoir, and the impact, if any, it may have on the Mattagami River System Water Management Plan (other mining projects have required minimum flow regimes from control dams for effluent dilution.)

7. Do you want to be added to our mailing list for future information about the Project?



Thank you for your input!

Completed forms can be left with a member of our team or faxed/mailed to:

IAMGOLD Corporation – Côté Gold Project
3 Mesomikenda Lake Road, P.O. Box 100, Gogama, ON P0M 1W0
E-mail: cotegold@iamgold.com; Fax: (705) 269-1199

*Information will be collected and used in accordance with the Environmental Assessment Act, and solely for the purpose of assisting the IAMGOLD Corporation in meeting environmental assessment and approval requirements. This material will be maintained on file for use during the study and may be included in Project documentation. **All comments will become part of the public record.** Personal information is protected under authority of the Freedom of Information and Protection of Privacy Act, Section 32, and is used solely for the purpose of completing this environmental assessment. Individuals will not be identified in any public documents or used for any purpose other than this Project.*

Your comments on the proposed Côté Gold Project are important to us and will be used in the planning and development of this proposed Project.

1. Which Open House did you attend?

- Timmins (February 26, 2013)
 Gogama (February 27, 2013)
 Sudbury (February 28, 2013)

2. How did you hear about this Open House?

- Newspaper advertisement
 Invitation
 Website
 From a neighbour / friend
 Other: _____

3. How would you rate the following about this Open House (circle number)?

| | Poor | ←————→ | | | Excellent | Comments |
|--|------|--------|---|---|-----------|----------|
| Location of the Open House | 1 | 2 | 3 | 4 | 5 | |
| Time of day it was held | 1 | 2 | 3 | 4 | 5 | |
| Length of the session | 1 | 2 | 3 | 4 | 5 | |
| Information provided | 1 | 2 | 3 | 4 | 5 | |
| Your opportunity to comment/be heard | 1 | 2 | 3 | 4 | 5 | |
| Your opportunity to have your questions answered | 1 | 2 | 3 | 4 | 5 | |

4. Do you have any comments, interests or suggestions related to the Côté Gold Project in general?

I felt the presentation was good & honestly put forward & answered.

5. Do you have information that might be relevant about the environment in or adjacent to the proposed mine area?

6. Additional questions or comments (if you would like a reply please provide your contact information below)?

concerned with lake level as OPG draws down the level a lot in the winter and takes awhile to get it back in the spring.

7. Do you want to be added to our mailing list for future information about the Project? *signed in already*

Name: _____

Organization or Affiliation (if applicable): _____

Street Address: _____

Municipality: _____

Postal Code: _____

Phone: _____

Email: _____

Thank you for your input!

Completed forms can be left with a member of our team or faxed/mailed to:

IAMGOLD Corporation – Côté Gold Project
3 Mesomikenda Lake Road, P.O. Box 100, Gogama, ON P0M 1W0
E-mail: cotegold@iamgold.com; Fax: (705) 269-1199

Information will be collected and used in accordance with the Environmental Assessment Act, and solely for the purpose of assisting the IAMGOLD Corporation in meeting environmental assessment and approval requirements. This material will be maintained on file for use during the study and may be included in Project documentation. All comments will become part of the public record. Personal information is protected under authority of the Freedom of Information and Protection of Privacy Act, Section 32, and is used solely for the purpose of completing this environmental assessment. Individuals will not be identified in any public documents or used for any purpose other than this Project.

Your comments on the proposed Côté Gold Project are important to us and will be used in the planning and development of this proposed Project.

1. Which Open House did you attend?

- Timmins (February 26, 2013)
 Gogama (February 27, 2013)
 Sudbury (February 28, 2013)

2. How did you hear about this Open House?

- Newspaper advertisement
 Invitation
 Website
 From a neighbour / friend
 Other: _____

3. How would you rate the following about this Open House (circle number)?

| | Poor ←————→ Excellent | | | | | Comments |
|--|-----------------------|---|---|---|---|----------|
| Location of the Open House | 1 | 2 | 3 | 4 | 5 | |
| Time of day it was held | 1 | 2 | 3 | 4 | 5 | |
| Length of the session | 1 | 2 | 3 | 4 | 5 | |
| Information provided | 1 | 2 | 3 | 4 | 5 | |
| Your opportunity to comment/be heard | 1 | 2 | 3 | 4 | 5 | |
| Your opportunity to have your questions answered | 1 | 2 | 3 | 4 | 5 | |

4. Do you have any comments, interests or suggestions related to the Côté Gold Project in general?

WATER DISCHARGE INTO MESOMIKENIDA LAKE
 ACID LEVELS 10% 20% not certain
 AND WATER TIMMINS NOT DRINKING WATER
 MESOMIKENIDA IS HEAD WATERS

5. Do you have information that might be relevant about the environment in or adjacent to the proposed mine area?

6. Additional questions or comments (if you would like a reply please provide your contact information below)?

7. Do you want to be added to our mailing list for future information about the Project?



Thank you for your input!

Completed forms can be left with a member of our team or faxed/mailed to:

IAMGOLD Corporation – Côté Gold Project
3 Mesomikenda Lake Road, P.O. Box 100, Gogama, ON P0M 1W0
E-mail: cotegold@iamgold.com; Fax: (705) 269-1199

*Information will be collected and used in accordance with the Environmental Assessment Act, and solely for the purpose of assisting the IAMGOLD Corporation in meeting environmental assessment and approval requirements. This material will be maintained on file for use during the study and may be included in Project documentation. **All comments will become part of the public record.** Personal information is protected under authority of the Freedom of Information and Protection of Privacy Act, Section 32, and is used solely for the purpose of completing this environmental assessment. Individuals will not be identified in any public documents or used for any purpose other than this Project.*

Your comments on the proposed Côté Gold Project are important to us and will be used in the planning and development of this proposed Project.

1. Which Open House did you attend?

- Timmins (February 26, 2013)
 Gogama (February 27, 2013)
 Sudbury (February 28, 2013)

2. How did you hear about this Open House?

- Newspaper advertisement Invitation Website
 From a neighbour / friend Other: _____

3. How would you rate the following about this Open House (circle number)?

| Location of the Open House | Poor ←————→ Excellent | | | | | Comments |
|--|-----------------------|---|---|---|---|----------|
| | 1 | 2 | 3 | 4 | 5 | |
| Time of day it was held | 1 | 2 | 3 | 4 | 5 | |
| Length of the session | 1 | 2 | 3 | 4 | 5 | |
| Information provided | 1 | 2 | 3 | 4 | 5 | |
| Your opportunity to comment/be heard | 1 | 2 | 3 | 4 | 5 | |
| Your opportunity to have your questions answered | 1 | 2 | 3 | 4 | 5 | N/A |

4. Do you have any comments, interests or suggestions related to the Côté Gold Project in general?

INTEREST IN RECONSTRUCTION PHASES.

5. Do you have information that might be relevant about the environment in or adjacent to the proposed mine area?

_____ *No* _____

6. Additional questions or comments (if you would like a reply please provide your contact information below)?

_____ *would appreciate the opportunity to quote* _____

_____ *and construction & maintenance of the mine* _____

_____ *facility.* _____

7. Do you want to be added to our mailing list for future information about the Project?



Thank you for your input!

Completed forms can be left with a member of our team or faxed/mailed to:

IAMGOLD Corporation – Côté Gold Project
3 Mesomikenda Lake Road, P.O. Box 100, Gogama, ON P0M 1W0
E-mail: cotegold@iamgold.com; Fax: (705) 269-1199

*Information will be collected and used in accordance with the Environmental Assessment Act, and solely for the purpose of assisting the IAMGOLD Corporation in meeting environmental assessment and approval requirements. This material will be maintained on file for use during the study and may be included in Project documentation. **All comments will become part of the public record.** Personal information is protected under authority of the Freedom of Information and Protection of Privacy Act, Section 32, and is used solely for the purpose of completing this environmental assessment. Individuals will not be identified in any public documents or used for any purpose other than this Project.*

Your comments on the proposed Côté Gold Project are important to us and will be used in the planning and development of this proposed Project.

1. Which Open House did you attend?

- Timmins (February 26, 2013)
 Gogama (February 27, 2013)
 Sudbury (February 28, 2013)

2. How did you hear about this Open House?

- Newspaper advertisement Invitation Website
 From a neighbour / friend Other: _____

3. How would you rate the following about this Open House (circle number)?

| | Poor | ←————→ | | | Excellent | Comments |
|--|------|--------|---|---|-----------|----------|
| Location of the Open House | 1 | 2 | 3 | 4 | 5 | |
| Time of day it was held | 1 | 2 | 3 | 4 | 5 | |
| Length of the session | 1 | 2 | 3 | 4 | 5 | |
| Information provided | 1 | 2 | 3 | 4 | 5 | |
| Your opportunity to comment/be heard | 1 | 2 | 3 | 4 | 5 | |
| Your opportunity to have your questions answered | 1 | 2 | 3 | 4 | 5 | |

4. Do you have any comments, interests or suggestions related to the Côté Gold Project in general?

lots of water to work around but you have taken time to work with what you got — will take some time to keep major interest groups happy but that's the way the world works these days.

5. Do you have information that might be relevant about the environment in or adjacent to the proposed mine area?

Not familiar with area.

6. Additional questions or comments (if you would like a reply please provide your contact information below)?

Nothing at the moment - all questions thoroughly answered at 'open house'.

7. Do you want to be added to our mailing list for future information about the Project? Yes, please.



Thank you for your input!

Completed forms can be left with a member of our team or faxed/mailed to:

IAMGOLD Corporation – Côté Gold Project
3 Mesomikenda Lake Road, P.O. Box 100, Gogama, ON P0M 1W0
E-mail: cotegold@iamgold.com; Fax: (705) 269-1199

Information will be collected and used in accordance with the Environmental Assessment Act, and solely for the purpose of assisting the IAMGOLD Corporation in meeting environmental assessment and approval requirements. This material will be maintained on file for use during the study and may be included in Project documentation. **All comments will become part of the public record.** Personal information is protected under authority of the Freedom of Information and Protection of Privacy Act, Section 32, and is used solely for the purpose of completing this environmental assessment. Individuals will not be identified in any public documents or used for any purpose other than this Project.

Your comments on the proposed Côté Gold Project are important to us and will be used in the planning and development of this proposed Project.

1. Which Open House did you attend?

- Timmins (February 26, 2013)
 Gogama (February 27, 2013)
 Sudbury (February 28, 2013)

2. How did you hear about this Open House?

- Newspaper advertisement
 Invitation
 Website
 Other: _____

3. How would you rate the following about this Open House (circle number)?

| | Poor | ←————→ | | | Excellent | Comments |
|--|------|--------|---|---|-----------|----------|
| Location of the Open House | 1 | 2 | 3 | 4 | 5 | |
| Time of day it was held | 1 | 2 | 3 | 4 | 5 | |
| Length of the session | 1 | 2 | 3 | 4 | 5 | |
| Information provided | 1 | 2 | 3 | 4 | 5 | |
| Your opportunity to comment/be heard | 1 | 2 | 3 | 4 | 5 | |
| Your opportunity to have your questions answered | 1 | 2 | 3 | 4 | 5 | |

4. Do you have any comments, interests or suggestions related to the Côté Gold Project in general?

I will be keeping a close eye on this project.

5. Do you have information that might be relevant about the environment in or adjacent to the proposed mine area?

Perhaps a look at Lakeshore gold would help as that mine is located near our potable water intake. They also have good ways to clear their dirty water.

6. Additional questions or comments (if you would like a reply please provide your contact information below)?

7. Do you want to be added to our mailing list for future information about the Project?



Thank you for your input!

Completed forms can be left with a member of our team or faxed/mailed to:

IAMGOLD Corporation – Côté Gold Project
3 Mesomikenda Lake Road, P.O. Box 100, Gogama, ON P0M 1W0
E-mail: cotegold@iamgold.com; Fax: (705) 269-1199

Information will be collected and used in accordance with the Environmental Assessment Act, and solely for the purpose of assisting the IAMGOLD Corporation in meeting environmental assessment and approval requirements. This material will be maintained on file for use during the study and may be included in Project documentation. **All comments will become part of the public record.** Personal information is protected under authority of the Freedom of Information and Protection of Privacy Act, Section 32, and is used solely for the purpose of completing this environmental assessment. Individuals will not be identified in any public documents or used for any purpose other than this Project.

would be interested in a site tour.
interested in flora/fauna.

Your comments on the proposed Côté Gold Project are important to us and will be used in the planning and development of this proposed Project.

1. Which Open House did you attend?

- Timmins (February 26, 2013)
 Gogama (February 27, 2013)
 Sudbury (February 28, 2013)

2. How did you hear about this Open House?

- Newspaper advertisement Invitation Website
 From a neighbour / friend Other: _____

3. How would you rate the following about this Open House (circle number)?

| Location of the Open House | Poor ←————→ Excellent | | | | | Comments |
|--|-----------------------|---|---|---|---|-------------------------------------|
| | 1 | 2 | 3 | 4 | 5 | |
| Location of the Open House | 1 | 2 | 3 | 4 | 5 | Overall good open house |
| Time of day it was held | 1 | 2 | 3 | 4 | 5 | opportunity to ask questions |
| Length of the session | 1 | 2 | 3 | 4 | 5 | still much to be |
| Information provided | 1 | 2 | 3 | 4 | 5 | discovered and learned |
| Your opportunity to comment/be heard | 1 | 2 | 3 | 4 | 5 | about site, especially |
| Your opportunity to have your questions answered | 1 | 2 | 3 | 4 | 5 | water management quality & quantity |

4. Do you have any comments, interests or suggestions related to the Côté Gold Project in general?

→ biggest challenge from a aquatics perspective will be to manage the collective disturbance to the landscape to manage water quality & quantity to preserve existing productivity

5. Do you have information that might be relevant about the environment in or adjacent to the proposed mine area?

Have a good understanding of aquatic productivity of lakes
rivers and streams in the Timmins area

- suggest initial focus bc on preserving catchment areas of existing
watersheds -

6. Additional questions or comments (if you would like a reply please provide your contact information below)?

Would be very interested in seeing more information
on aquatic invertebrates for the proposed project area.

7. Do you want to be added to our mailing list for future information about the Project?

Thank you for your input!

Completed forms can be left with a member of our team or faxed/mailed to:

IAMGOLD Corporation – Côté Gold Project

3 Mesomikenda Lake Road, P.O. Box 100, Gogama, ON P0M 1W0

E-mail: cotegold@iamgold.com; Fax: (705) 269-1199

Information will be collected and used in accordance with the Environmental Assessment Act, and solely for the purpose of assisting the IAMGOLD Corporation in meeting environmental assessment and approval requirements. This material will be maintained on file for use during the study and may be included in Project documentation. **All comments will become part of the public record.** Personal information is protected under authority of the Freedom of Information and Protection of Privacy Act, Section 32, and is used solely for the purpose of completing this environmental assessment. Individuals will not be identified in any public documents or used for any purpose other than this Project.

Your comments on the proposed Côté Gold Project are important to us and will be used in the planning and development of this proposed Project.

1. Which Open House did you attend?

- Timmins (February 26, 2013)
 Gogama (February 27, 2013)
 Sudbury (February 28, 2013)

2. How did you hear about this Open House?

- Newspaper advertisement
 Invitation
 Website
 From a neighbour / friend
 Other: _____

3. How would you rate the following about this Open House (circle number)?

| Location of the Open House | Poor ←————→ Excellent | | | | | Comments |
|--|-----------------------|---|---|---|---|----------|
| | 1 | 2 | 3 | 4 | 5 | |
| Location of the Open House | 1 | 2 | 3 | 4 | 5 | |
| Time of day it was held | 1 | 2 | 3 | 4 | 5 | |
| Length of the session | 1 | 2 | 3 | 4 | 5 | |
| Information provided | 1 | 2 | 3 | 4 | 5 | |
| Your opportunity to comment/be heard | 1 | 2 | 3 | 4 | 5 | |
| Your opportunity to have your questions answered | 1 | 2 | 3 | 4 | 5 | |

4. Do you have any comments, interests or suggestions related to the Côté Gold Project in general?

5. Do you have information that might be relevant about the environment in or adjacent to the proposed mine area?

6. Additional questions or comments (if you would like a reply please provide your contact information below)?

7. Do you want to be added to our mailing list for future information about the Project?

Name: _____

Organization or Affiliation (if applicable): _____

Street Address: _____

Municipality: _____

Postal Code: _____

Phone: _____

Email: _____

Thank you for your input!

Completed forms can be left with a member of our team or faxed/mailed to:

IAMGOLD Corporation – Côté Gold Project
3 Mesomikenda Lake Road, P.O. Box 100, Gogama, ON P0M 1W0
E-mail: cotegold@iamgold.com; Fax: (705) 269-1199

*Information will be collected and used in accordance with the Environmental Assessment Act, and solely for the purpose of assisting the IAMGOLD Corporation in meeting environmental assessment and approval requirements. This material will be maintained on file for use during the study and may be included in Project documentation. **All comments will become part of the public record.** Personal information is protected under authority of the Freedom of Information and Protection of Privacy Act, Section 32, and is used solely for the purpose of completing this environmental assessment. Individuals will not be identified in any public documents or used for any purpose other than this Project.*

Your comments on the proposed Côté Gold Project are important to us and will be used in the planning and development of this proposed Project.

1. Which Open House did you attend?

- Timmins (February 26, 2013)
 Gogama (February 27, 2013)
 Sudbury (February 28, 2013)

2. How did you hear about this Open House?

- Newspaper advertisement
 Invitation
 Website
 From a neighbour / friend
 Other: _____

3. How would you rate the following about this Open House (circle number)?

| | Poor | ←————→ | | | Excellent | |
|--|------|--------|---|---|-----------|--|
| Location of the Open House | 1 | 2 | 3 | 4 | 5 | |
| Time of day it was held | 1 | 2 | 3 | 4 | 5 | |
| Length of the session | 1 | 2 | 3 | 4 | 5 | |
| Information provided | 1 | 2 | 3 | 4 | 5 | |
| Your opportunity to comment/be heard | 1 | 2 | 3 | 4 | 5 | |
| Your opportunity to have your questions answered | 1 | 2 | 3 | 4 | 5 | |

4. Do you have any comments, interests or suggestions related to the Côté Gold Project in general?

5. Do you have information that might be relevant about the environment in or adjacent to the proposed mine area?

6. Additional questions or comments (if you would like a reply please provide your contact information below)?

7. Do you want to be added to our mailing list for future information about the Project?

Name: _____

Organization or Affiliation (if applicable): _____

Street Address: _____

Municipality: _____

Postal Code: _____

Phone: _____

Email: _____

Thank you for your input!

Completed forms can be left with a member of our team or faxed/mailed to:

IAMGOLD Corporation – Côté Gold Project
3 Mesomikenda Lake Road, P.O. Box 100, Gogama, ON P0M 1W0
E-mail: cotegold@iamgold.com; Fax: (705) 269-1199

*Information will be collected and used in accordance with the Environmental Assessment Act, and solely for the purpose of assisting the IAMGOLD Corporation in meeting environmental assessment and approval requirements. This material will be maintained on file for use during the study and may be included in Project documentation. **All comments will become part of the public record.** Personal information is protected under authority of the Freedom of Information and Protection of Privacy Act, Section 32, and is used solely for the purpose of completing this environmental assessment. Individuals will not be identified in any public documents or used for any purpose other than this Project.*

Your comments on the proposed Côté Gold Project are important to us and will be used in the planning and development of this proposed Project.

1. Which Open House did you attend?

- Timmins (February 26, 2013)
 Gogama (February 27, 2013)
 Sudbury (February 28, 2013)

2. How did you hear about this Open House?

- Newspaper advertisement Invitation Website
 From a neighbour / friend Other: _____

3. How would you rate the following about this Open House (circle number)?

| | Poor | ←————→ | | | Excellent | Comments |
|--|------|--------|---|---|-----------|----------|
| Location of the Open House | 1 | 2 | 3 | 4 | 5 | |
| Time of day it was held | 1 | 2 | 3 | 4 | 5 | |
| Length of the session | 1 | 2 | 3 | 4 | 5 | |
| Information provided | 1 | 2 | 3 | 4 | 5 | |
| Your opportunity to comment/be heard | 1 | 2 | 3 | 4 | 5 | |
| Your opportunity to have your questions answered | 1 | 2 | 3 | 4 | 5 | |

4. Do you have any comments, interests or suggestions related to the Côté Gold Project in general?

5. Do you have information that might be relevant about the environment in or adjacent to the proposed mine area?

6. Additional questions or comments (if you would like a reply please provide your contact information below)?

7. Do you want to be added to our mailing list for future information about the Project?

Name: _____

Organization or Affiliation (if applicable): _____

Street Address: _____

Municipality: _____

Postal Code: _____

Phone: _____

Email: _____

Thank you for your input!

Completed forms can be left with a member of our team or faxed/mailed to:

IAMGOLD Corporation – Côté Gold Project
3 Mesomikenda Lake Road, P.O. Box 100, Gogama, ON P0M 1W0
E-mail: cotegold@iamgold.com; Fax: (705) 269-1199

Information will be collected and used in accordance with the Environmental Assessment Act, and solely for the purpose of assisting the IAMGOLD Corporation in meeting environmental assessment and approval requirements. This material will be maintained on file for use during the study and may be included in Project documentation. All comments will become part of the public record. Personal information is protected under authority of the Freedom of Information and Protection of Privacy Act, Section 32, and is used solely for the purpose of completing this environmental assessment. Individuals will not be identified in any public documents or used for any purpose other than this Project.

Your comments on the proposed Côté Gold Project are important to us and will be used in the planning and development of this proposed Project.

1. Which Open House did you attend?

- Timmins (February 26, 2013)
 Gogama (February 27, 2013)
 Sudbury (February 28, 2013)

2. How did you hear about this Open House?

- Newspaper advertisement
 Invitation
 Website
 From a neighbour / friend
 Other: _____

3. How would you rate the following about this Open House (circle number)?

| | Poor | ←————→ | | | Excellent | Comments |
|--|------|--------|---|---|-----------|----------|
| Location of the Open House | 1 | 2 | 3 | 4 | 5 | |
| Time of day it was held | 1 | 2 | 3 | 4 | 5 | |
| Length of the session | 1 | 2 | 3 | 4 | 5 | |
| Information provided | 1 | 2 | 3 | 4 | 5 | |
| Your opportunity to comment/be heard | 1 | 2 | 3 | 4 | 5 | |
| Your opportunity to have your questions answered | 1 | 2 | 3 | 4 | 5 | |

4. Do you have any comments, interests or suggestions related to the Côté Gold Project in general?

Very interested in supporting in development projects as the project moves forward
 Seeking Phillip Gauthier's contact info to discuss Bulk Refine Plant, layout, budgeting, etc among other projects

5. Do you have information that might be relevant about the environment in or adjacent to the proposed mine area?

N/A

6. Additional questions or comments (if you would like a reply please provide your contact information below)?

as per section 4.
Please provide me w Phillip Gauthier's contact info

7. Do you want to be added to our mailing list for future information about the Project?



Thank you for your input!

Completed forms can be left with a member of our team or faxed/mailed to:

IAMGOLD Corporation – Côté Gold Project
3 Mesomikenda Lake Road, P.O. Box 100, Gogama, ON P0M 1W0
E-mail: cotegold@iamgold.com; Fax: (705) 269-1199

Information will be collected and used in accordance with the Environmental Assessment Act, and solely for the purpose of assisting the IAMGOLD Corporation in meeting environmental assessment and approval requirements. This material will be maintained on file for use during the study and may be included in Project documentation. All comments will become part of the public record. Personal information is protected under authority of the Freedom of Information and Protection of Privacy Act, Section 32, and is used solely for the purpose of completing this environmental assessment. Individuals will not be identified in any public documents or used for any purpose other than this Project.

Your comments on the proposed Côté Gold Project are important to us and will be used in the planning and development of this proposed Project.

1. Which Open House did you attend?

- Timmins (February 26, 2013)
 Gogama (February 27, 2013)
 Sudbury (February 28, 2013)

2. How did you hear about this Open House?

- Newspaper advertisement
 Invitation
 Website
 From a neighbour / friend
 Other: _____

3. How would you rate the following about this Open House (circle number)?

| Location of the Open House | Poor ←————→ Excellent | | | | | Comments |
|--|-----------------------|---|---|---|---|----------|
| | 1 | 2 | 3 | 4 | 5 | |
| Location of the Open House | 1 | 2 | 3 | 4 | 5 | |
| Time of day it was held | 1 | 2 | 3 | 4 | 5 | |
| Length of the session | 1 | 2 | 3 | 4 | 5 | |
| Information provided | 1 | 2 | 3 | 4 | 5 | |
| Your opportunity to comment/be heard | 1 | 2 | 3 | 4 | 5 | |
| Your opportunity to have your questions answered | 1 | 2 | 3 | 4 | 5 | |

4. Do you have any comments, interests or suggestions related to the Côté Gold Project in general?

The Mine waste rock area closest to the original camp is not acceptable to the cottagers near the landing

5. Do you have information that might be relevant about the environment in or adjacent to the proposed mine area?

6. Additional questions or comments (if you would like a reply please provide your contact information below)?

7. Do you want to be added to our mailing list for future information about the Project?

Name: _____

Organization or Affiliation (if applicable): _____

Street Address: _____

Municipality: _____

Postal Code: _____

Phone: _____

Email: _____

Thank you for your input!

Completed forms can be left with a member of our team or faxed/mailed to:

IAMGOLD Corporation – Côté Gold Project
3 Mesomikenda Lake Road, P.O. Box 100, Gogama, ON P0M 1W0
E-mail: cotegold@iamgold.com; Fax: (705) 269-1199

*Information will be collected and used in accordance with the Environmental Assessment Act, and solely for the purpose of assisting the IAMGOLD Corporation in meeting environmental assessment and approval requirements. This material will be maintained on file for use during the study and may be included in Project documentation. **All comments will become part of the public record.** Personal information is protected under authority of the Freedom of Information and Protection of Privacy Act, Section 32, and is used solely for the purpose of completing this environmental assessment. Individuals will not be identified in any public documents or used for any purpose other than this Project.*

Your comments on the proposed Côté Gold Project are important to us and will be used in the planning and development of this proposed Project.

1. Which Open House did you attend?

- Timmins (February 26, 2013)
 Gogama (February 27, 2013)
 Sudbury (February 28, 2013)

2. How did you hear about this Open House?

- Newspaper advertisement
 Invitation
 Website
 From a neighbour / friend
 Other: _____

3. How would you rate the following about this Open House (circle number)?

| | Poor | ←————→ | | | Excellent | Comments |
|--|------|--------|---|---|-----------|----------|
| | 1 | 2 | 3 | 4 | 5 | |
| Location of the Open House | 1 | 2 | 3 | 4 | 5 | |
| Time of day it was held | 1 | 2 | 3 | 4 | 5 | |
| Length of the session | 1 | 2 | 3 | 4 | 5 | |
| Information provided | 1 | 2 | 3 | 4 | 5 | |
| Your opportunity to comment/be heard | 1 | 2 | 3 | 4 | 5 | |
| Your opportunity to have your questions answered | 1 | 2 | 3 | 4 | 5 | |

4. Do you have any comments, interests or suggestions related to the Côté Gold Project in general?

5. Do you have information that might be relevant about the environment in or adjacent to the proposed mine area?

6. Additional questions or comments (if you would like a reply please provide your contact information below)?

7. Do you want to be added to our mailing list for future information about the Project?



Thank you for your input!

Completed forms can be left with a member of our team or faxed/mailed to:

IAMGOLD Corporation – Côté Gold Project
3 Mesomikenda Lake Road, P.O. Box 100, Gogama, ON P0M 1W0
E-mail: cotegold@iamgold.com; Fax: (705) 269-1199

*Information will be collected and used in accordance with the Environmental Assessment Act, and solely for the purpose of assisting the IAMGOLD Corporation in meeting environmental assessment and approval requirements. This material will be maintained on file for use during the study and may be included in Project documentation. **All comments will become part of the public record.** Personal information is protected under authority of the Freedom of Information and Protection of Privacy Act, Section 32, and is used solely for the purpose of completing this environmental assessment. Individuals will not be identified in any public documents or used for any purpose other than this Project.*

Your comments on the proposed Côté Gold Project are important to us and will be used in the planning and development of this proposed Project.

1. Which Open House did you attend?

- Timmins (February 26, 2013)
 Gogama (February 27, 2013)
 Sudbury (February 28, 2013)

2. How did you hear about this Open House?

- Newspaper advertisement
 Invitation
 Website
 From a neighbour / friend
 Other: _____

3. How would you rate the following about this Open House (circle number)?

| | Poor | ←————→ | | | Excellent | Comments |
|--|------|--------|---|---|-----------|----------|
| | 1 | 2 | 3 | 4 | 5 | |
| Location of the Open House | 1 | 2 | 3 | 4 | 5 | |
| Time of day it was held | 1 | 2 | 3 | 4 | 5 | |
| Length of the session | 1 | 2 | 3 | 4 | 5 | |
| Information provided | 1 | 2 | 3 | 4 | 5 | |
| Your opportunity to comment/be heard | 1 | 2 | 3 | 4 | 5 | |
| Your opportunity to have your questions answered | 1 | 2 | 3 | 4 | 5 | |

4. Do you have any comments, interests or suggestions related to the Côté Gold Project in general?

5. Do you have information that might be relevant about the environment in or adjacent to the proposed mine area?

6. Additional questions or comments (if you would like a reply please provide your contact information below)?

7. Do you want to be added to our mailing list for future information about the Project?

Name: _____

Organization or Affiliation (if applicable): _____

Street Address: _____

Municipality: _____

Postal Code: _____

Phone: _____

Email: _____

Thank you for your input!

Completed forms can be left with a member of our team or faxed/mailed to:

IAMGOLD Corporation – Côté Gold Project

3 Mesomikenda Lake Road, P.O. Box 100, Gogama, ON P0M 1W0

E-mail: cotegold@iamgold.com; Fax: (705) 269-1199

*Information will be collected and used in accordance with the Environmental Assessment Act, and solely for the purpose of assisting the IAMGOLD Corporation in meeting environmental assessment and approval requirements. This material will be maintained on file for use during the study and may be included in Project documentation. **All comments will become part of the public record.** Personal information is protected under authority of the Freedom of Information and Protection of Privacy Act, Section 32, and is used solely for the purpose of completing this environmental assessment. Individuals will not be identified in any public documents or used for any purpose other than this Project.*

Your comments on the proposed Côté Gold Project are important to us and will be used in the planning and development of this proposed Project.

1. Which Open House did you attend?

- Timmins (February 26, 2013)
 Gogama (February 27, 2013)
 Sudbury (February 28, 2013)

2. How did you hear about this Open House?

- Newspaper advertisement
 Invitation
 Website
 From a neighbour / friend
 Other: _____

3. How would you rate the following about this Open House (circle number)?

| | Poor | ←————→ | | | Excellent | Comments |
|--|------|--------|---|---|-----------|--|
| Location of the Open House | 1 | 2 | 3 | 4 | 5 | |
| Time of day it was held | 1 | 2 | 3 | 4 | 5 | |
| Length of the session | 1 | 2 | 3 | 4 | 5 | |
| Information provided | 1 | 2 | 3 | 4 | 5 | <i>could have had a poster board along with the handout for the mining stats and resources</i> |
| Your opportunity to comment/be heard | 1 | 2 | 3 | 4 | 5 | |
| Your opportunity to have your questions answered | 1 | 2 | 3 | 4 | 5 | |

4. Do you have any comments, interests or suggestions related to the Côté Gold Project in general?

5. Do you have information that might be relevant about the environment in or adjacent to the proposed mine area?

6. Additional questions or comments (if you would like a reply please provide your contact information below)?

7. Do you want to be added to our mailing list for future information about the Project?

Name: _____

Organization or Affiliation (if applicable): _____

Street Address: _____

Municipality: _____

Postal Code: _____

Phone: _____

Email: _____

Thank you for your input!

Completed forms can be left with a member of our team or faxed/mailed to:

IAMGOLD Corporation – Côté Gold Project
3 Mesomikenda Lake Road, P.O. Box 100, Gogama, ON P0M 1W0
E-mail: cotegold@iamgold.com; Fax: (705) 269-1199

*Information will be collected and used in accordance with the Environmental Assessment Act, and solely for the purpose of assisting the IAMGOLD Corporation in meeting environmental assessment and approval requirements. This material will be maintained on file for use during the study and may be included in Project documentation. **All comments will become part of the public record.** Personal information is protected under authority of the Freedom of Information and Protection of Privacy Act, Section 32, and is used solely for the purpose of completing this environmental assessment. Individuals will not be identified in any public documents or used for any purpose other than this Project.*

Your comments on the proposed Côté Gold Project are important to us and will be used in the planning and development of this proposed Project.

1. Which Open House did you attend?

- Timmins (February 26, 2013)
 Gogama (February 27, 2013)
 Sudbury (February 28, 2013)

2. How did you hear about this Open House?

- Newspaper advertisement
 Invitation
 Website
 From a neighbour / friend
 Other: _____

3. How would you rate the following about this Open House (circle number)?

| | Poor | ←————→ | | | Excellent | Comments |
|--|------|--------|---|---|-----------|-------------------------------------|
| | 1 | 2 | 3 | 4 | 5 | |
| Location of the Open House | 1 | 2 | 3 | 4 | 5 | Chelmsford would be a good location |
| Time of day it was held | 1 | 2 | 3 | 4 | 5 | |
| Length of the session | 1 | 2 | 3 | 4 | 5 | |
| Information provided | 1 | 2 | 3 | 4 | 5 | |
| Your opportunity to comment/be heard | 1 | 2 | 3 | 4 | 5 | |
| Your opportunity to have your questions answered | 1 | 2 | 3 | 4 | 5 | |

4. Do you have any comments, interests or suggestions related to the Côté Gold Project in general?

In the information provided, it is written that the project is "about 170km by road northwest of Sudbury." I'm assuming this distance is taken from Sudbury's downtown as opposed to communities ~~to~~ within the City of Greater Sudbury that may be most affected such as Chelmsford, Dowling, Leacock/Onaping, etc. These communities are located right on Hwy 144 and still within the Greater Sudbury municipal boundary. ~~It should perhaps be noted~~ The distance from the ~~edge~~ of ~~the~~ Northwest edge of the City (ie. Leacock/Onaping) should perhaps be noted in the information provided. ~~to~~

5. Do you have information that might be relevant about the environment in or adjacent to the proposed mine area?

6. Additional questions or comments (if you would like a reply please provide your contact information below)?

We look forward to the opportunity to be consulted on the socio-economic information.

Thanks

7. Do you want to be added to our mailing list for future information about the Project?



Thank you for your input!

Completed forms can be left with a member of our team or faxed/mailed to:

IAMGOLD Corporation – Côté Gold Project
3 Mesomikenda Lake Road, P.O. Box 100, Gogama, ON P0M 1W0
E-mail: cotegold@iamgold.com; Fax: (705) 269-1199

*Information will be collected and used in accordance with the Environmental Assessment Act, and solely for the purpose of assisting the IAMGOLD Corporation in meeting environmental assessment and approval requirements. This material will be maintained on file for use during the study and may be included in Project documentation. **All comments will become part of the public record.** Personal information is protected under authority of the Freedom of Information and Protection of Privacy Act, Section 32, and is used solely for the purpose of completing this environmental assessment. Individuals will not be identified in any public documents or used for any purpose other than this Project.*

5. Do you have information that might be relevant about the environment in or adjacent to the proposed mine area?

N/A

6. Additional questions or comments (if you would like a reply please provide your contact information below)?

7. Do you want to be added to our mailing list for future information about the Project?



Thank you for your input!

Completed forms can be left with a member of our team or faxed/mailed to:

IAMGOLD Corporation – Côté Gold Project
3 Mesomikenda Lake Road, P.O. Box 100, Gogama, ON P0M 1W0
E-mail: cotegold@iamgold.com; Fax: (705) 269-1199

*Information will be collected and used in accordance with the Environmental Assessment Act, and solely for the purpose of assisting the IAMGOLD Corporation in meeting environmental assessment and approval requirements. This material will be maintained on file for use during the study and may be included in Project documentation. **All comments will become part of the public record.** Personal information is protected under authority of the Freedom of Information and Protection of Privacy Act, Section 32, and is used solely for the purpose of completing this environmental assessment. Individuals will not be identified in any public documents or used for any purpose other than this Project.*

Your comments on the proposed Côté Gold Project are important to us and will be used in the planning and development of this proposed Project.

1. Which Open House did you attend?

- Timmins (February 26, 2013)
 Gogama (February 27, 2013)
 Sudbury (February 28, 2013)

2. How did you hear about this Open House?

- Newspaper advertisement Invitation Website
 From a neighbour / friend Other: _____

3. How would you rate the following about this Open House (circle number)?

| | Poor | ←————→ | | | Excellent | Comments |
|--|------|--------|---|---|-----------|----------|
| Location of the Open House | 1 | 2 | 3 | 4 | 5 | |
| Time of day it was held | 1 | 2 | 3 | 4 | 5 | |
| Length of the session | 1 | 2 | 3 | 4 | 5 | |
| Information provided | 1 | 2 | 3 | 4 | 5 | |
| Your opportunity to comment/be heard | 1 | 2 | 3 | 4 | 5 | |
| Your opportunity to have your questions answered | 1 | 2 | 3 | 4 | 5 | |

4. Do you have any comments, interests or suggestions related to the Côté Gold Project in general?

Representing Pioneer Construction, Sudbury
 we would welcome the opportunity to TENDER WORK,
 or provide labour and equipment on this project.

5. Do you have information that might be relevant about the environment in or adjacent to the proposed mine area?

No

6. Additional questions or comments (if you would like a reply please provide your contact information below)?

7. Do you want to be added to our mailing list for future information about the Project?



Thank you for your input!

Completed forms can be left with a member of our team or faxed/mailed to:

IAMGOLD Corporation – Côté Gold Project
3 Mesomikenda Lake Road, P.O. Box 100, Gogama, ON P0M 1W0
E-mail: cotegold@iamgold.com; Fax: (705) 269-1199

*Information will be collected and used in accordance with the Environmental Assessment Act, and solely for the purpose of assisting the IAMGOLD Corporation in meeting environmental assessment and approval requirements. This material will be maintained on file for use during the study and may be included in Project documentation. **All comments will become part of the public record.** Personal information is protected under authority of the Freedom of Information and Protection of Privacy Act, Section 32, and is used solely for the purpose of completing this environmental assessment. Individuals will not be identified in any public documents or used for any purpose other than this Project.*

Your comments on the proposed Côté Gold Project are important to us and will be used in the planning and development of this proposed Project.

1. Which Open House did you attend?

- Timmins (February 26, 2013)
 Gogama (February 27, 2013)
 Sudbury (February 28, 2013)

2. How did you hear about this Open House?

- Newspaper advertisement Invitation Website
 From a neighbour / friend Other: mail out

3. How would you rate the following about this Open House (circle number)?

| | Poor | ←————→ | | | Excellent | Comments |
|--|------|--------|---|---|-----------|----------|
| Location of the Open House | 1 | 2 | 3 | 4 | 5 | |
| Time of day it was held | 1 | 2 | 3 | 4 | 5 | |
| Length of the session | 1 | 2 | 3 | 4 | 5 | |
| Information provided | 1 | 2 | 3 | 4 | 5 | |
| Your opportunity to comment/be heard | 1 | 2 | 3 | 4 | 5 | |
| Your opportunity to have your questions answered | 1 | 2 | 3 | 4 | 5 | |

4. Do you have any comments, interests or suggestions related to the Côté Gold Project in general?

I was hoping to get more information about jobs starting sooner than 2017

5. Do you have information that might be relevant about the environment in or adjacent to the proposed mine area?

6. Additional questions or comments (if you would like a reply please provide your contact information below)?

it was hoping you were excepting applications.

7. Do you want to be added to our mailing list for future information about the Project?

Name: _____

Organization or Affiliation (if applicable): _____

Street Address: _____

Municipality: _____

Postal Code: _____

Phone: _____

Email: _____

Thank you for your input!

Completed forms can be left with a member of our team or faxed/mailed to:

IAMGOLD Corporation – Côté Gold Project
3 Mesomikenda Lake Road, P.O. Box 100, Gogama, ON P0M 1W0
E-mail: cotegold@iamgold.com; Fax: (705) 269-1199

*Information will be collected and used in accordance with the Environmental Assessment Act, and solely for the purpose of assisting the IAMGOLD Corporation in meeting environmental assessment and approval requirements. This material will be maintained on file for use during the study and may be included in Project documentation. **All comments will become part of the public record.** Personal information is protected under authority of the Freedom of Information and Protection of Privacy Act, Section 32, and is used solely for the purpose of completing this environmental assessment. Individuals will not be identified in any public documents or used for any purpose other than this Project.*

Your comments on the proposed Côté Gold Project are important to us and will be used in the planning and development of this proposed Project.

1. Which Open House did you attend?

- Timmins (February 26, 2013)
 Gogama (February 27, 2013)
 Sudbury (February 28, 2013)

2. How did you hear about this Open House?

- Newspaper advertisement
 Invitation
 Website
 From a neighbour / friend
 Other: _____

3. How would you rate the following about this Open House (circle number)?

| | Poor | ←————→ | | | Excellent | Comments |
|--|------|--------|---|---|-----------|----------|
| Location of the Open House | 1 | 2 | 3 | 4 | 5 | |
| Time of day it was held | 1 | 2 | 3 | 4 | 5 | |
| Length of the session | 1 | 2 | 3 | 4 | 5 | |
| Information provided | 1 | 2 | 3 | 4 | 5 | |
| Your opportunity to comment/be heard | 1 | 2 | 3 | 4 | 5 | |
| Your opportunity to have your questions answered | 1 | 2 | 3 | 4 | 5 | |

4. Do you have any comments, interests or suggestions related to the Côté Gold Project in general?

Will it help people in Gogama Not just Timmins Sudbury

Schooling will the Mine Pay for that, help people in town, property value go up town

5. Do you have information that might be relevant about the environment in or adjacent to the proposed mine area?

Fish area
wild life

6. Additional questions or comments (if you would like a reply please provide your contact information below)?

later
Disabile now
want there later
if ash

7. Do you want to be added to our mailing list for future information about the Project?



Thank you for your input!

Completed forms can be left with a member of our team or faxed/mailed to:

IAMGOLD Corporation – Côté Gold Project
3 Mesomikenda Lake Road, P.O. Box 100, Gogama, ON P0M 1W0
E-mail: cotegold@iamgold.com; Fax: (705) 269-1199

Information will be collected and used in accordance with the Environmental Assessment Act, and solely for the purpose of assisting the IAMGOLD Corporation in meeting environmental assessment and approval requirements. This material will be maintained on file for use during the study and may be included in Project documentation. **All comments will become part of the public record.** Personal information is protected under authority of the Freedom of Information and Protection of Privacy Act, Section 32, and is used solely for the purpose of completing this environmental assessment. Individuals will not be identified in any public documents or used for any purpose other than this Project.

Your comments on the proposed Côté Gold Project are important to us and will be used in the planning and development of this proposed Project.

1. Which Open House did you attend?

Timmins
(February 26, 2013)

Gogama
(February 27, 2013)

Sudbury
(February 28, 2013)

2. How did you hear about this Open House?

Newspaper advertisement

Invitation

Website

From a neighbour / friend

Other: _____

3. How would you rate the following about this Open House (circle number)?

| Location of the Open House | Poor ←————→ Excellent | | | | | Comments |
|--|-----------------------|---|---|---|---|----------|
| | 1 | 2 | 3 | 4 | 5 | |
| Location of the Open House | 1 | 2 | 3 | 4 | 5 | |
| Time of day it was held | 1 | 2 | 3 | 4 | 5 | |
| Length of the session | 1 | 2 | 3 | 4 | 5 | |
| Information provided | 1 | 2 | 3 | 4 | 5 | |
| Your opportunity to comment/be heard | 1 | 2 | 3 | 4 | 5 | |
| Your opportunity to have your questions answered | 1 | 2 | 3 | 4 | 5 | |

4. Do you have any comments, interests or suggestions related to the Côté Gold Project in general?

5. Do you have information that might be relevant about the environment in or adjacent to the proposed mine area?

6. Additional questions or comments (if you would like a reply please provide your contact information below)?

7. Do you want to be added to our mailing list for future information about the Project?



Thank you for your input!

Completed forms can be left with a member of our team or faxed/mailed to:

IAMGOLD Corporation – Côté Gold Project
3 Mesomikenda Lake Road, P.O. Box 100, Gogama, ON P0M 1W0
E-mail: cotegold@iamgold.com; Fax: (705) 269-1199

*Information will be collected and used in accordance with the Environmental Assessment Act, and solely for the purpose of assisting the IAMGOLD Corporation in meeting environmental assessment and approval requirements. This material will be maintained on file for use during the study and may be included in Project documentation. **All comments will become part of the public record.** Personal information is protected under authority of the Freedom of Information and Protection of Privacy Act, Section 32, and is used solely for the purpose of completing this environmental assessment. Individuals will not be identified in any public documents or used for any purpose other than this Project.*